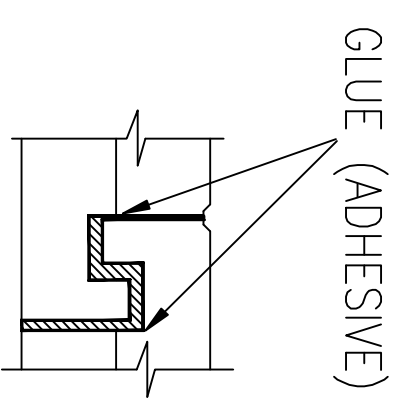
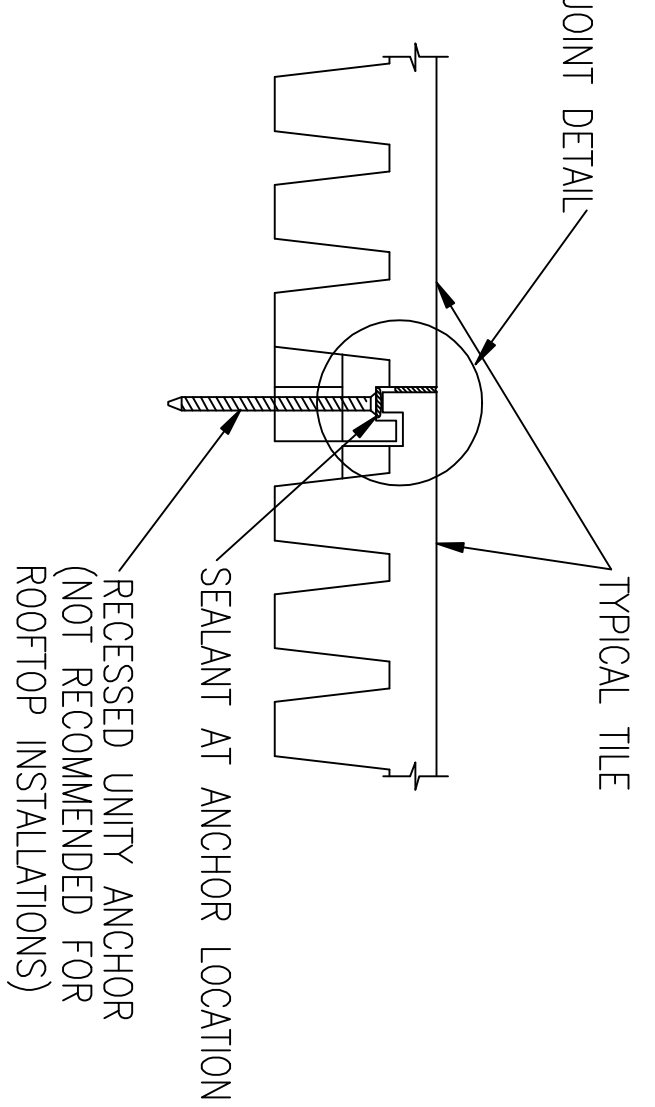


JOINT DETAIL AT PIMPLE (Projections)/DIMPLE (Slots)



NOTE: FIELD APPLY ADHESIVE AT EACH INTERLOCK BOTH INSIDE THE JOINT AND ON TOP (OUTSIDE EDGE)

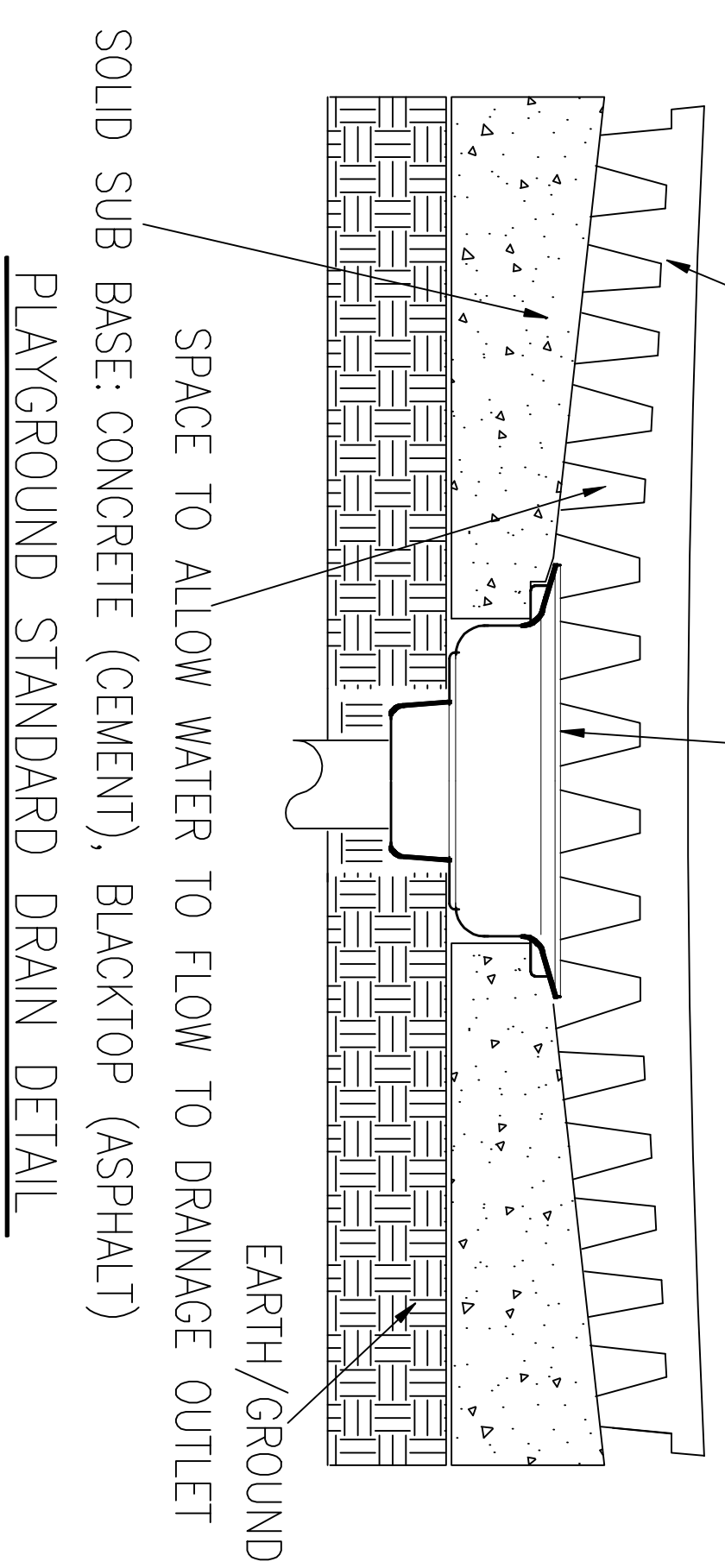
TYPICAL TILE ANCHOR DETAIL



TYPICAL TILE ANCHOR DETAIL

MALE INTERLOCKS WITH ROUND COUNTER SUNK BOLT-DOWN AREA FASTEN TO SOLID SUB-BASE WITH COUNTER SUNK RECESSED HEAD UNITY ANCHOR (NOT RECOMMENDED FOR ROOFTOP INSTALLATIONS)

TYPICAL TILE ANCHOR DETAIL



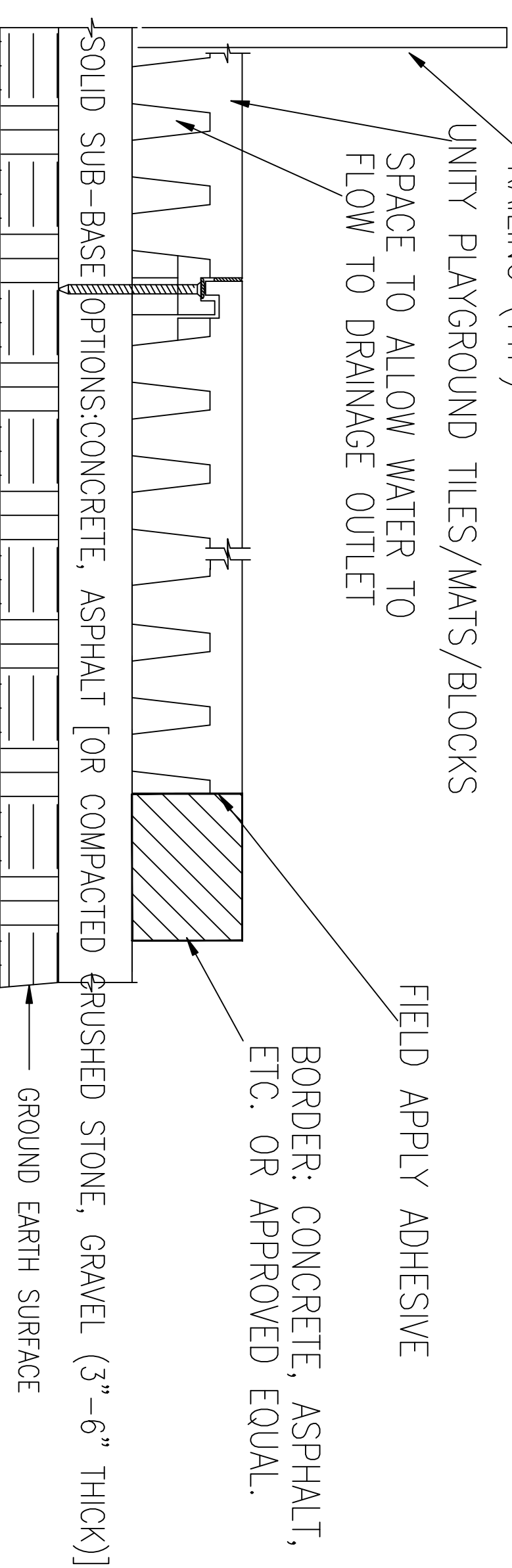
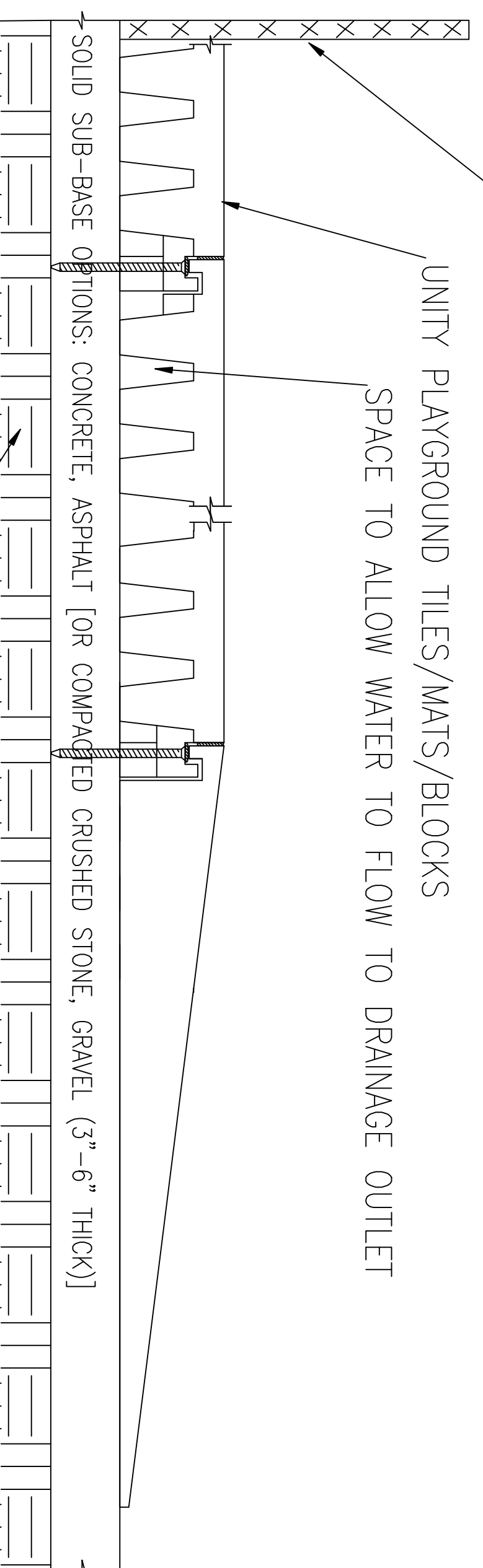
CHAIN LINK FENCE (TYP)

UNITY PLAYGROUND TILES/MATS/BLOCKS

SPACE TO ALLOW WATER TO FLOW TO DRAINAGE OUTLET

SOLID SUB-BASE: CONCRETE (CEMENT), BLACKTOP (ASPHALT)

PLAYGROUND STANDARD DRAIN DETAIL



PLAYGROUND TILE-/MAT/BLOCK/PAVER PRODUCT DETAILS

NO FASTENERS, PINS, CLIPS, BLOCKS

General Notes

No.	Revision/Issue	Date
4	UPDATE	2/16/20
3	UPDATE	8/2/16
2	PATENT UPDATE	11-29-11
1	ORIGINAL	9-24-08

UNITY CREATIONS LTD./UNITY SURFACING SYSTEMS

SALES & MARKETING:
56 BLOOMINGDALE RD.
HICKSVILLE, NY 11801

T: (1-877) 41-UNITY
F: (845) 246-1700
E-MAIL: productinfo@surfacingystems.com
WEB: www.surfacingystems.com

MANUFACTURING PLANT:

UNITY CREATIONS, LTD.
3997 ROUTE 9W (P.O. BOX 9)
SAUGERTIES, NY 12477

PROJECT:

Project	Sheet
Date	
Scale	NOTED