

Unity™ Surfacing

Manufacturing Rubberized Safety Surfacing, Flooring, Paver and OEM products.

ATHLETIC and Recreational



Do It Right...The First Time!



Printed on recycled paper. Copyright 2025, www.UnitySurfacing.com, Unity Creations. Ltd. All rights reserved. Image: School Playground

From Waste Tires.....



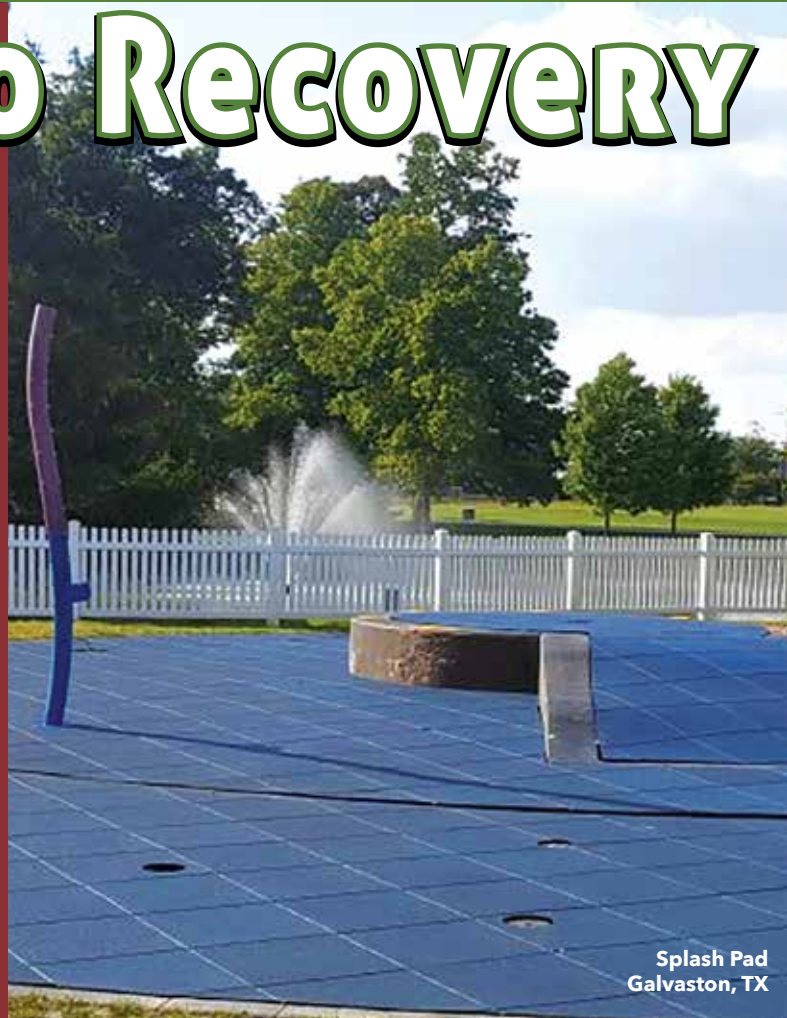
From Virgin Rubber..



.....To Recovery

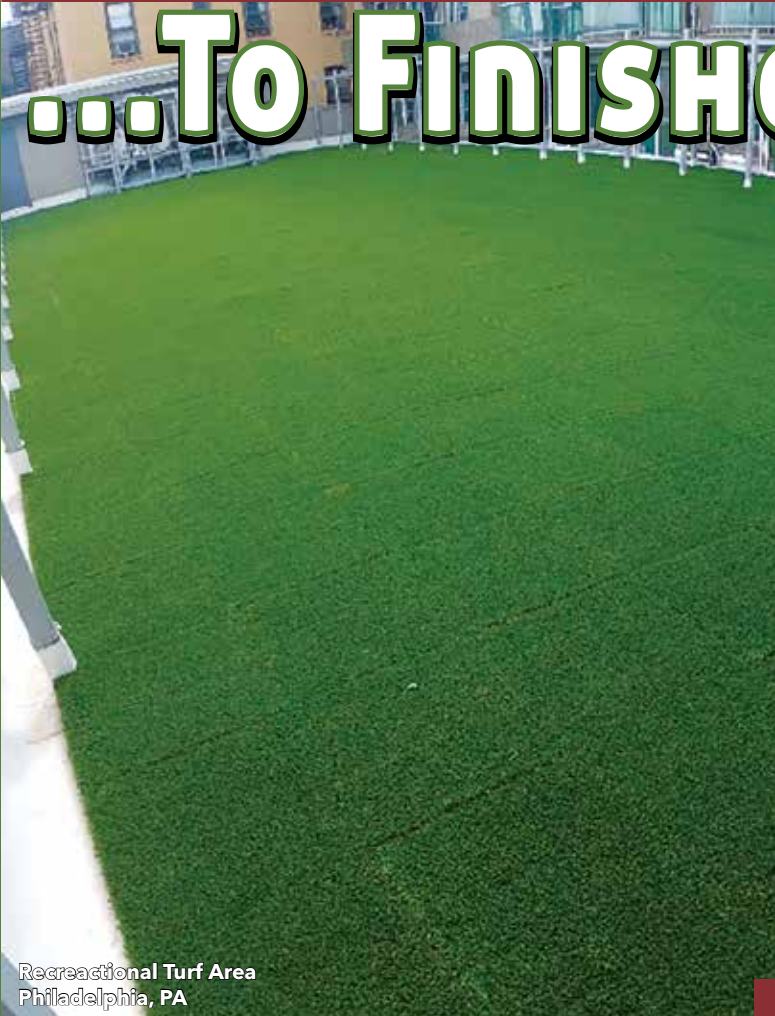


Outdoor Fitness
Ocean City, MD

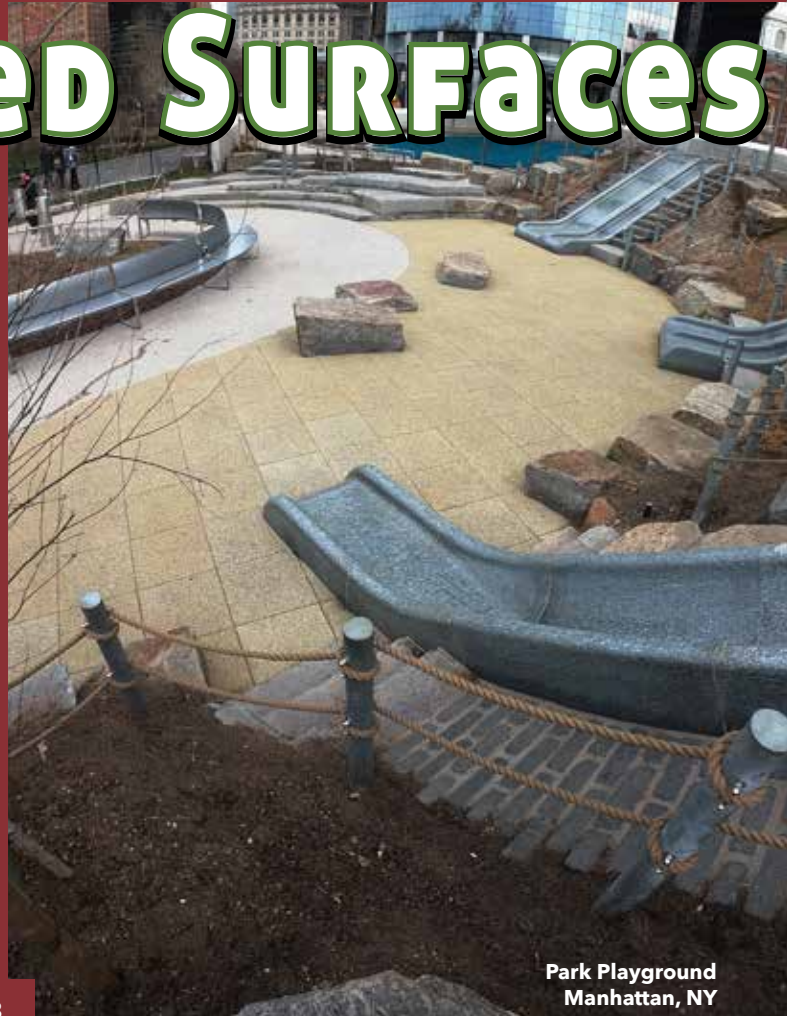


Splash Pad
Galveston, TX

...To Finished Surfaces



Recreational Turf Area
Philadelphia, PA



Park Playground
Manhattan, NY

The Safety Surfacing, Flooring & Paver Solution

Unity's products are engineered and manufactured using the best and safest materials available through our sister company which recycles tires and virgin rubber in-house. We are a manufacturing company that has been in business since 1987, developing and patenting superior, resilient products that can be made from either recycled tires or virgin rubber material that is clean and safe to use in almost any environment. Our ingenious design and unique features give us an unparalleled advantage over competing products in the industry.



Safety, Quantity, Durability, Performance & Long Term Value Define Unity's Products

The Advantages to our system over other on the market today include:

- *Excellent drainage*
- *Very stable footing*
- *Low life cycle costs*
- *Will not decompose*
- *Provides noise reduction*
- *Diverse finish (top) options*
- *No retaining edge needed*
- *Easy Cleaning/Maintenance*
- *Consistent shock absorbency*
- *Provides vandalism protection*
- *Will not displace during usage*
- *Attractive appearance/finishes*



A fall onto a shock absorbing surfacing is less likely to cause serious injury in contrast to a fall onto a hard unsafe surface. Head impact injuries from falls onto unsafe are almost always life threatening. Studies show the severity of injury is decreased when using shock absorbing surfaces such as our unitary rubberized self-interlocking play tiles. Additionally; walking, playing, running, standing, or simply just enjoying our products helps avoid leg fatigue in people of all ages.



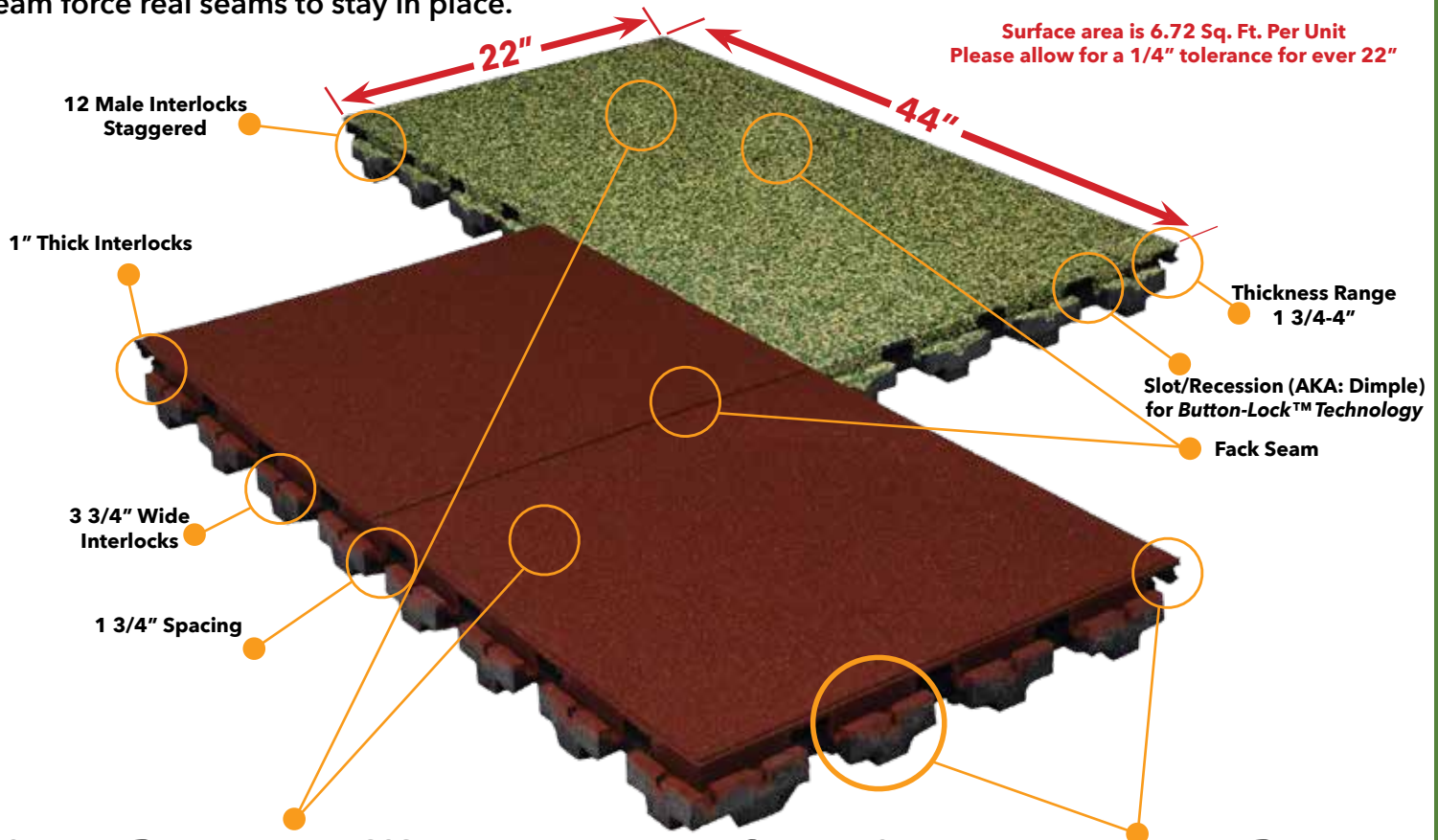
A playground or any surfacing and flooring area that has uncontrolled access may require a unitary surface, such as our self-interlocking playground tiles, to ensure the highest standard of safety. A requirement by many federal, state and local government agencies who are looking to stay compliant, while at the same time, reduce maintenance costs commonly associated with loose filled products.



Space is the most valuable asset in most major cities. There is an increasing demand for our products to be installed on rooftops and indoors. We take great pride as a manufacturer who has passed several types of class "A" fire tests, including modified versions specifically designed for these applications, making our products superior for such installations. If required, other fire rated versions are available prior to ordering.

PRODUCT SPECIFICATIONS - TOP SIDE

Unlike other playground surfaces, Unity features a flexible *double tile/mat/block paver* system. With it has a fake seam down the middle to accommodate and adjust to, minor variations in sub-bases. Our resilient double panel allows us to have a monolithic *Step & Repeat* pattern, which lines real seams with fake seams as if you were installing "brickwork." These technological developments in design act as a backup to further resist separation, curling, peeling and vandalism across a playground area. Fake seam force real seams to stay in place.

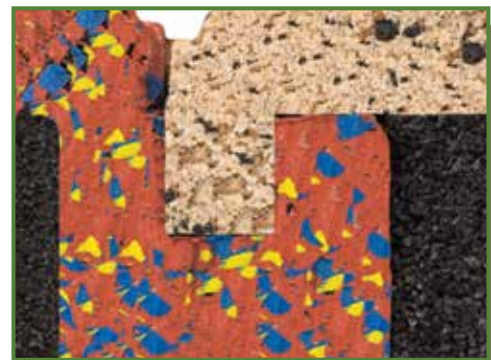


HIGH DENSITY WEAR TOPS



Our wear-top is manufactured using recycled rubber in conjunction with a wide variety of slip resistant Pigments and/of blended EDPM/TPV material, coupled with our specially formulated binders, These high density, textured wear-toop options are resilient and won't crack, puncture or heave in the most hostile of weather conditions. This versatility is unmatched and provides year round use to the end-user

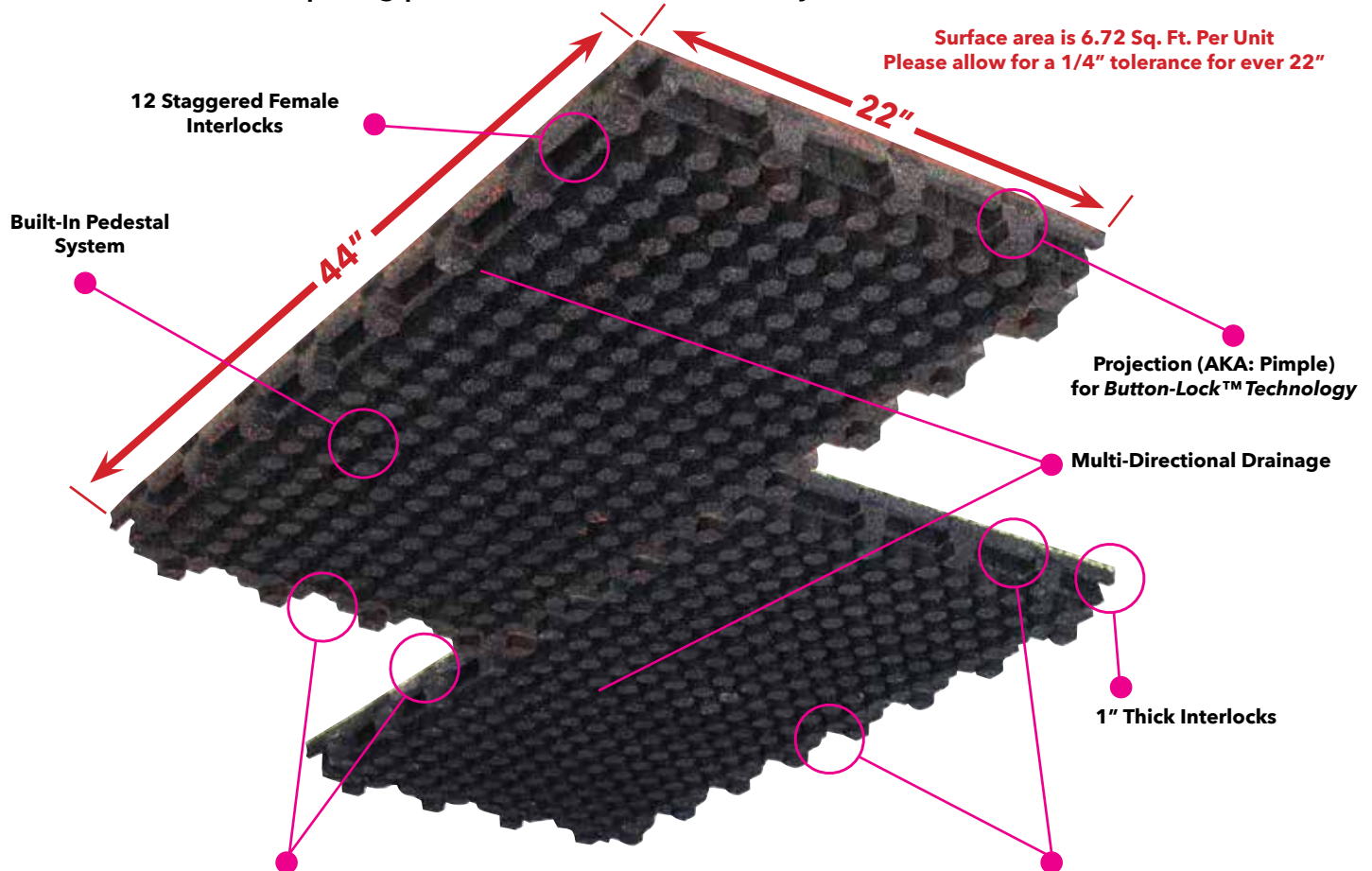
SELF INTERLOCKING DESIGN



The patented durable C-shaped self-interlocking design is built directly into the product itself, It locks tightly together thanks to the supporting "back-wall," which prohibits unnecessary separation, curling, peeling and shifting that may result in vandalism. It is installed with our specially formulated glue/adhesive, while still proving unlimited access for any maintenance related issues.

PRODUCT SPECIFICATIONS - BOTTOM SIDE

With this view from the bottom, one can see that our solid coned (feet and /or leg) design acts as a shock absorber from falls onto the surface below. Being a water permeable product, it also helps with storm water management, by allowing water to flow freely and evenly to the drainage outlet when installed on a crushed stone or a solid sub-base such as concrete (cement) and/or asphalt (blacktop). Our product design also eliminates any "hard spots" and/or "picture framing," a common design problem with other competing products on the market today.

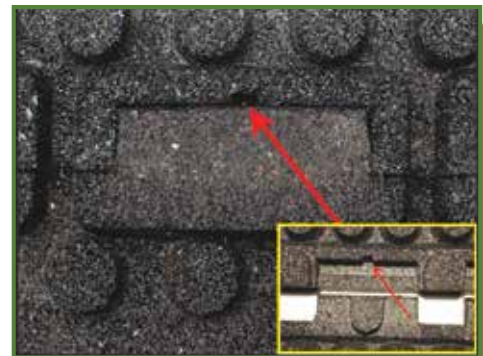


Button-Lock™ Technology



A revolutionary advancement in design is our patented Button-Lock™ technology where the projection of one rubber tile is receivable by a corresponding slot/recession of another rubber tile. It is designed to literally "snap and hook" into place, which has been tested to provide an extra layer of protection to the end user. This additional locking mechanism provides the most secure installations on the market. both horizontally and vertically.

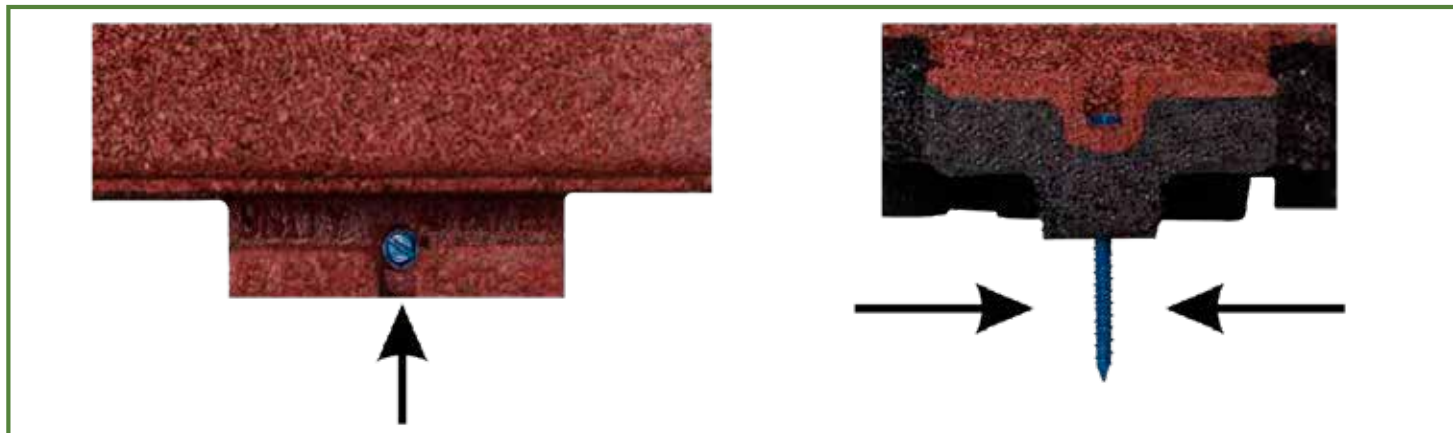
GLUE RESERVIOR



Our unique glue drainage port is the only patented system on the market specifically engineered and designed to allow any access glue/adhesive, applied during the installation process, to ooze down and away from the top of our products. This provides the completed area with a nice clean finished look without the burden of glue being tracked onto the newly installed product by untrained contractors/installers.

BOLT-DOWN CAPABILITIES

A **patented feature** that is exclusive to us, is the Bolt-Down Capability that is found within the male portion of our interlocking system. It is countersunk for added strength and security, even under the most extreme environmental conditions and/or usage. Twelve bolts are used across various portions of the locking mechanism to ensure that vandalism will not be tolerated by Unity and its products.



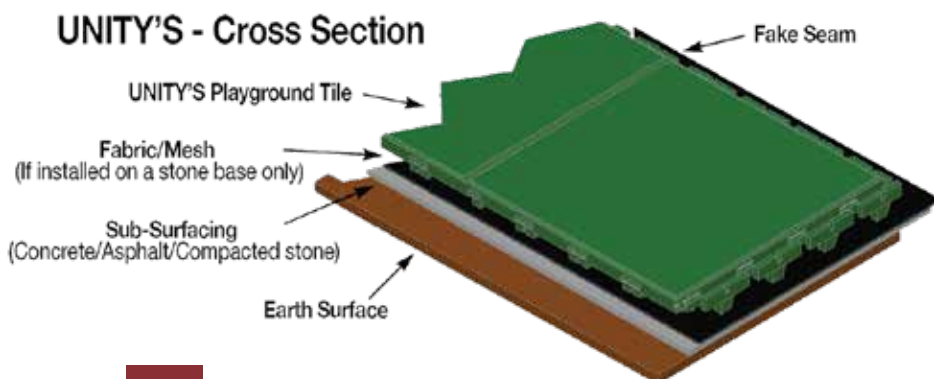
HANDICAPPED ACCESSIBILITY

More and more agencies are becoming aware of the fact that all public facilities must be handicapped accessible. With the 1991 passage of the "Americans with Disabilities Act" (ADA), many areas are being planned or modified to give people with disabilities an opportunity to participate in more everyday activities. Regardless of who you are, we make it easy to maneuver strollers, crutches, wheel chairs, canes, walkers, etc., as all of our products are designed to give those with or without disabilities and varying mobility's access to freely navigate as per ASTM's Accessibility-Rotational Penetrometer test.

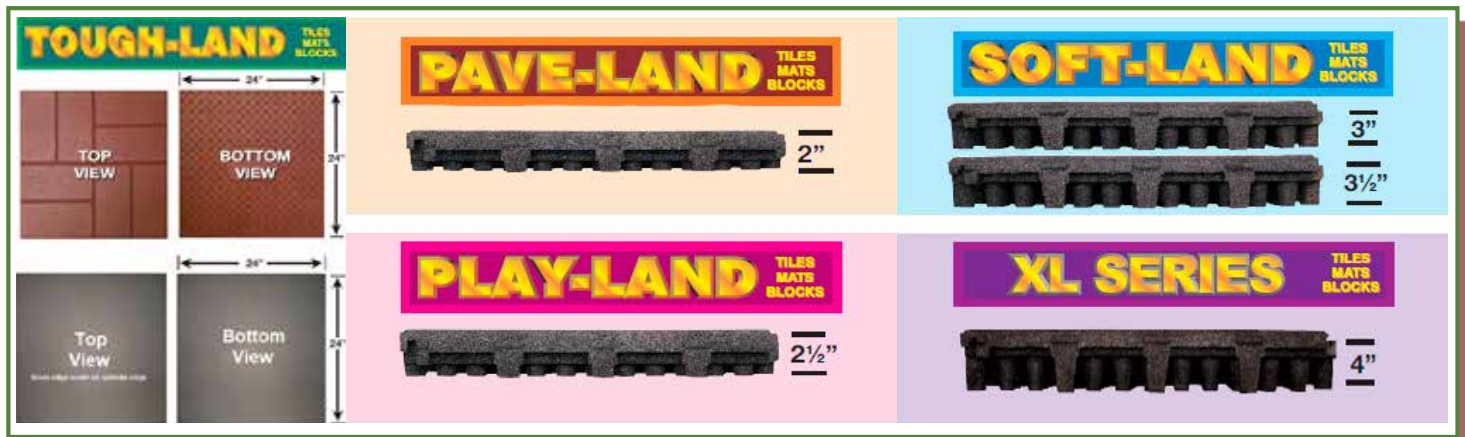


SUB-SURFACING/Base Options

With life expectancy of our products being about 20 years or more (if properly maintained), we suggest installing a solid sub-base material (concrete or asphalt) leaving a slight pitch for drainage. Other types of sub-base material include: Compacted crushed stone (quarry, blend), decking, roof membrane and/or any standard indoor/outdoor flooring that does not have large stress cracks.

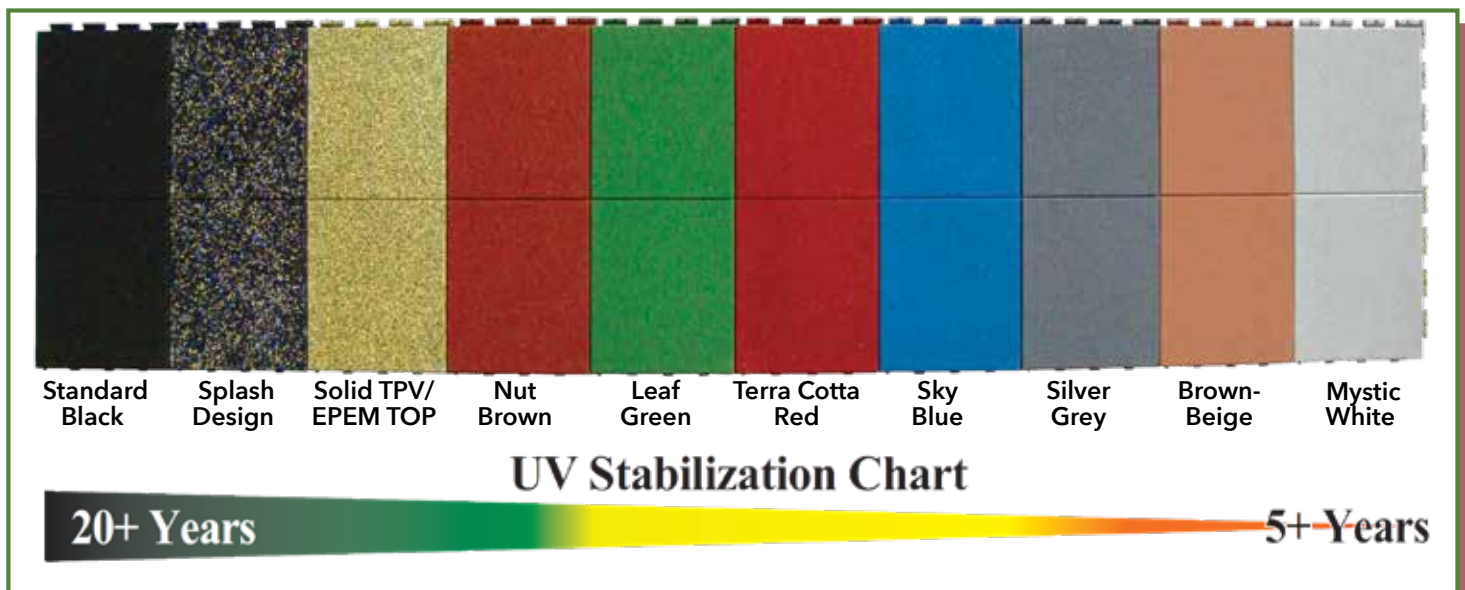


PRODUCT SERIES: THICKNESSES



STANDARD COLOR CHOICES (PIGMENT & EPDM)

All of Unity's interlocking unitary rubberized safety surfacing, flooring and paver products are made with tire buffing and crumb rubber granules recycled in-house and mixed with a clear urethane. Colorized products are made with pigmented dyes combined with black rubber. These pigments are dispersed throughout the top. A wide variety of colors to choose from include: Black, Splash Design, Solid TPV/EPDM TOP, Nut Brown, Leaf Green, Terra Cotta Red, Sky Blue, Silver Grey, Brown-Beige & Mystic White.



EPDM/TPV CHIP CHOICES

The Splash Design and Solid TPV/EPDM Top tiles/mats/blocks/pavers can be manufactured using diverse color combinations and/or percentages generated from the TPV/EPDM granule chart listed below. As a result, one can have unlimited design potential that would compliment any playground, day care facility, fitness, athletic and/or recreational areas. TPV/EDM color choices include:



STANDARD SKIN TOP BLENDS



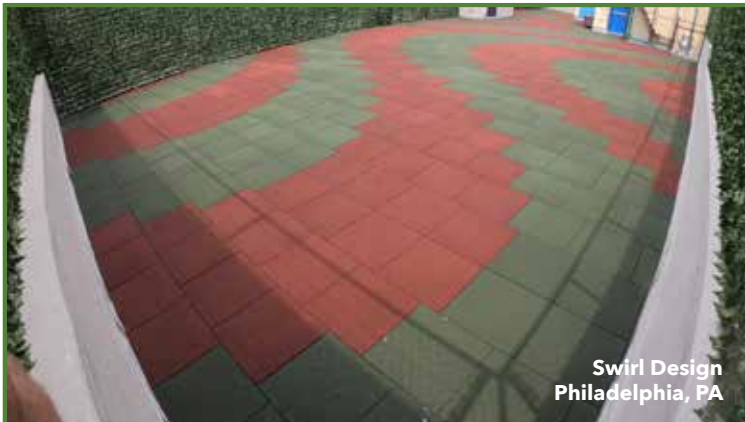
INSTALLATION

Our Products place in the intermediate category regarding installation difficulty. Contractors carry out most of the installations. An installation manual/guide is available upon request and shipped with every order. Adhesive must be applied to a solid base and/or interlocks of our products. Tools that are common for typical installations include: a utility knife or jig saw for cutting, a straight edge to make your cuts accurately, a string line and tape measure. A trowel or caulking gun may be needed as well.



The newly developed interlocking features can provide several types of installation procedures allowing one to stagger the joints/interlocks anywhere. This allow for free-flowing designs, layouts and patterns that are effortless to achieve with the "running bond" method, known as out "Step & Repeat", being most popular.

DESIGNS/LAYOUTS/PATTERNS



Test Results

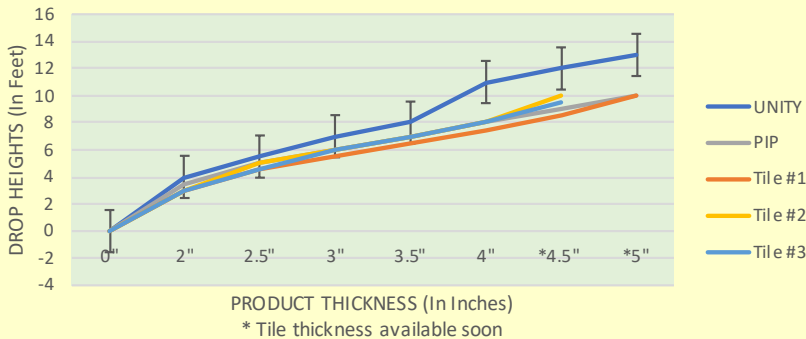
IPEMA - DROP TESTING



G-MAX & HIC test results conducted at an independent testing laboratory per ASTM F-1292, F-355 Procedure D (ANSI Head-Form C), **Passed**



FALL PROTECTION RATINGS



Weathering (Aging) Tests

Test results conducted at an independent laboratory per ASTM C-67, & ASTM D-573, **PASSED**

Skid Resistance Test

Test results conducted at an independent laboratory per ASTM E-303, **PASSED**

Fire Resistance Test

Test results conducted at an independent laboratory per ASTM E-108 & E-648, **PASSED**

Accessibilty-Rotational Penetrometer (ADA)

Test results conducted at an independent laboratory per ASTM F-1951-99, **PASSED**

Tensile/Tear/Elongation Tests

Test results conducted at an independent laboratory per ASTM D412, & 624, **CALL**

No-Lead Content Test

Test results conducted at an independent laboratory per CPSC CH-E 1002-08(HR 4040 CPSI Act Of 2008) No Lead, **PASSED**

These critical tests are the value of avoiding legal problems resulting from lawsuits that stem from inappropriate ground cover. Unity meets or exceeds these ASTM, ADA, CPSC & IPEMA standards when compared with other competing products on the market today. Please ask about the many other tests we have completed as well.

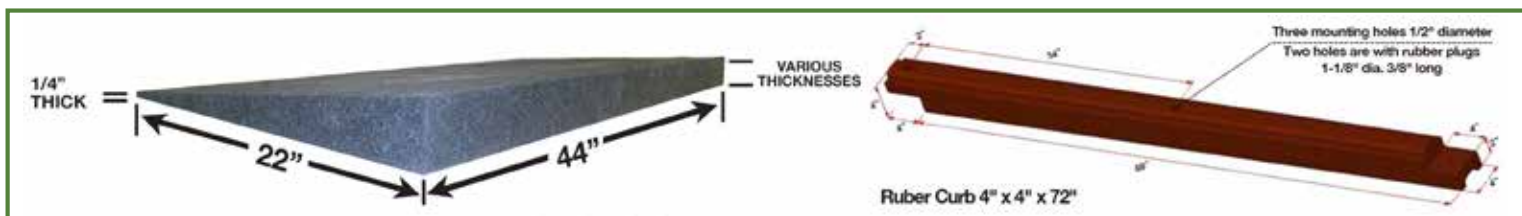
Warranty

Due to the extreme durability of our safety surfacing, flooring and paver system, each and every product manufactured by Unity Surfacing is backed by a full warranty to protect you and your investment from manufacturing defects. To further strengthen the guarantee of our products and services. Our warranties are specifically designed to assist architects, engineers, project managers, owners and end users to maximize the cost and performance warranty benefits associated with our system. In the end, we offer our customers exceptional value that is unmatched in the industry. Contact Unity directly for more information, A written warranty is available upon request.



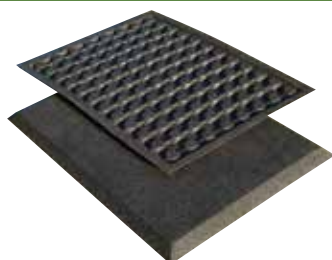
School Playground
Staten Island, NY

FINISHED EDGING: Transition Ramps/Border Guards (Rubber Curbs)



When a wall, fence, curb, parapet or other bordering systems are not available, the transitional ramps and rubber curbs that we offer are a great solution to complement any area, giving it a complete "finished" look. Our ramps provide easy access to any surfacing/flooring area. They also come in a wide variety of colors and thicknesses to fit your needs.

Wear-Pads



BORDER-GUARD



* Please ask us about other OEM products that we can produce exclusively for you and your needs.

APPROVALS, SPONSORS, AFFILIATES & MEMBERSHIPS



ADA - The Access Board Effective 1992, the Americans with Disabilities Act (ADA), a federal law, prohibits disability-based discrimination by states, local governments, and private entities. The ADA specifically requires that "each service, program, or activity conducted by a public entity, when viewed in its entirety, be readily accessible to, and usable by, individuals with disabilities". The Access Board provides resources, information and guidance related to the ADA, including insight on developing public spaces like rooftops that meet ADA guidelines. Unity meets or exceeds these standards via ASTM-F-1951-21.



ASTM - The American Society for Testing and Materials (ASTM) is the scientific and technical organization chiefly responsible for developing standards for testing different materials. ASTM introduced Standards for Consumer Safety Performance Specifications for Playground Applications designated as D3161, C518-98. It is the standard that establishes minimum acceptable performance specifications for most types of surfacing, flooring and pavers applications. Unity meets or exceeds these standards as seen throughout our brochure.



CPSC - The consumer product safety commission (CPSC) is an independent agency for the United States federal government whose purpose is to inform the public risks associated with consumer products. The CPSC's handbook for public playground safety is the reference tool for the playground industry; including specifications for the use of playground surfacing and recommendations. Unity meets or exceeds these standards as seen throughout our brochure.



ECOCYCLABLE - Ecocyclable™ is defined as any product being used more than once (i.e. reusable) as the same, or different, recycled product. Unity's safety surfacing, flooring and paver products can be used in many different locations over and over again. We are the only manufacturer to receive such a prestigious symbol.

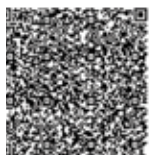


IPEMA stands for International Play Equipment Manufacturers Association. It's a nonprofit organization that certifies playground equipment and surfacing material in the United States and Canada. They govern standards concerning both the play equipment that your kids run, jump, and climb on and the surfacing material, like tiles, that your children play on to of.



USGBC - The USGBC (United States Green Building Council) via the LEED (Leadership in Energy & Environmental Design) is the nation's foremost coalition of leaders from across the building industry working to promote buildings that are environmentally responsible, profitable and healthy places to live and work. It is leading a national consensus for producing a new generation of buildings that deliver high performance inside and out. As a member of the USGBC program, using our products will help to achieve up to seven (7) LEED points/credits.

Local Dealer's (Rep's) Business Card Here



Unity Creations, Ltd.
Unity Surfacing Systems
3997 Rt. 9W (P.O. Box 9)
Saugerties, NY 12477

T: (1-877) 41-Unity F: (845) 246-1700
E-mail: productinfo@surfacingystems.com
Internet: www.surfacingystems.com

Unity believes that our products size, weight, durability, longevity, fall protection ratings (the highest in the industry), and ability to have an integrated self-interlocking feature (for rooftop applications), with bolt-down capabilities (for playground use), can be effectively and easily secured on site to eliminate the potential for wind-up-lift, vandalism and maintenance issues. Everyone at Unity Creations, Ltd. / Unity Surfacing Systems would like to thank you for your interest in our products and services.

www.UnitySurfacing.com

Printed on recycled paper. Copyright 2025, www.UnitySurfacing.com, Unity Creations, Ltd. All rights reserved.