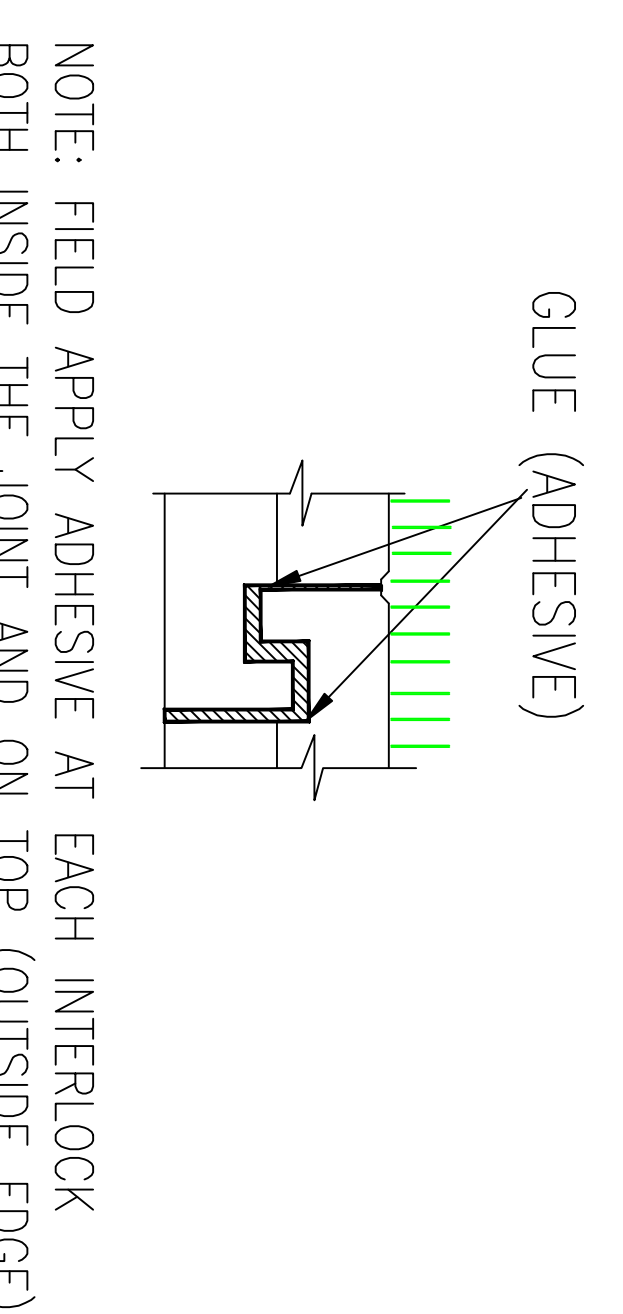
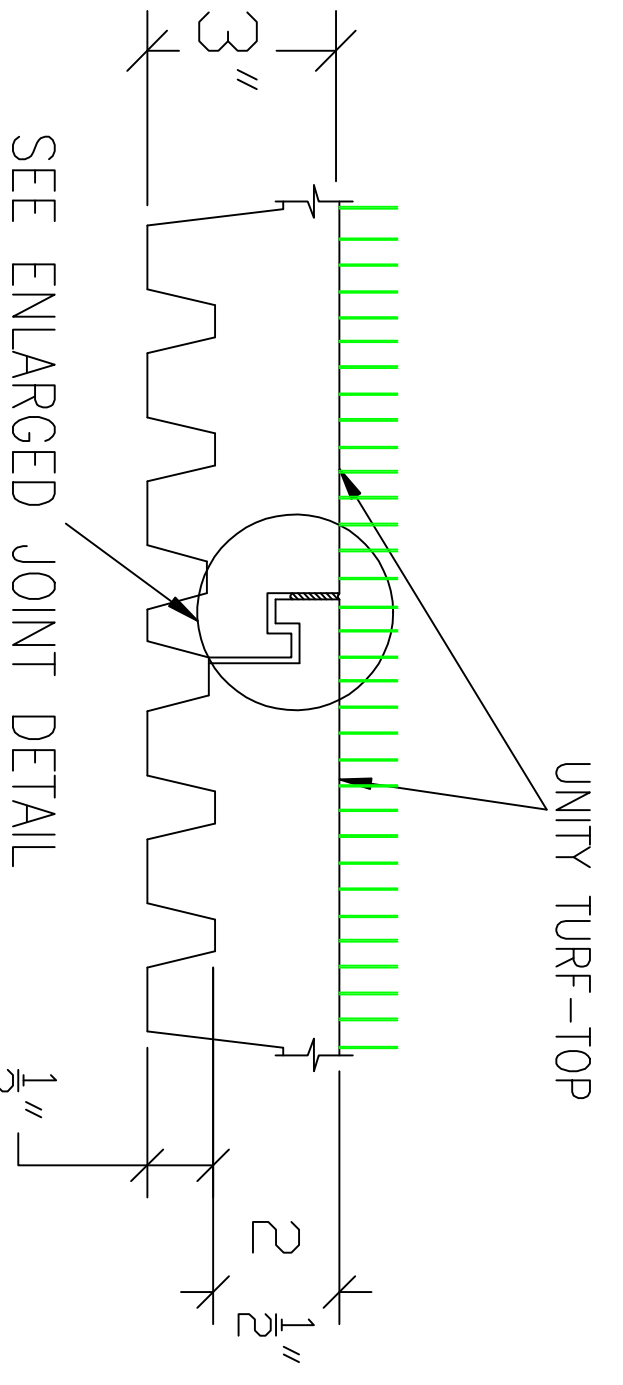
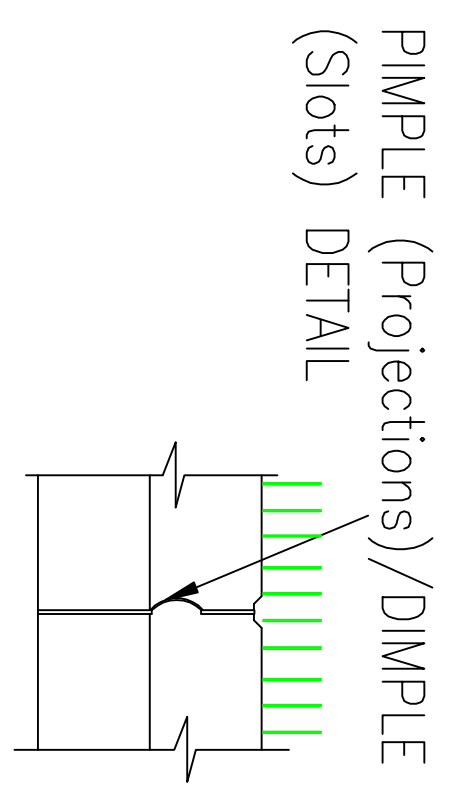


TOP VIEW OF UNITY TILE/MAT/BLOCK/PAVER

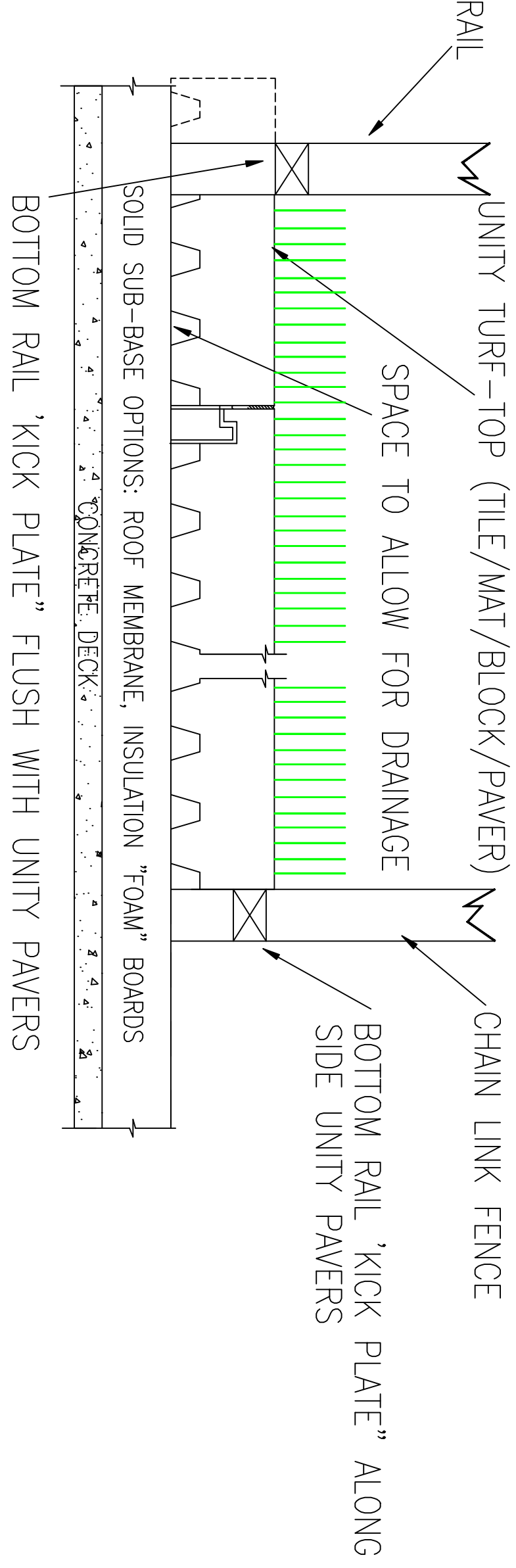
BOTTOM VIEW OF UNITY TILE/MAT/BLOCK/PAVER



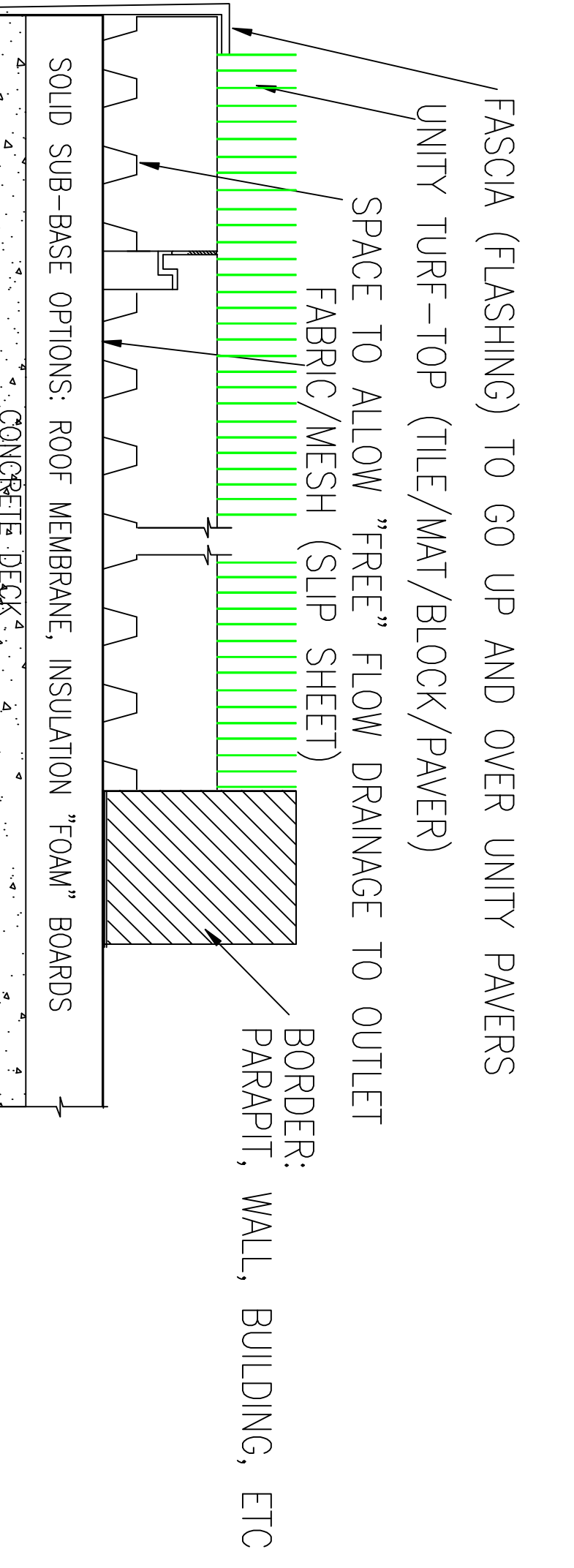
JOINT DETAIL AT PIMPLE (Projections)/DIMPLE (Slots)

TYPICAL TILE JOINT DETAIL

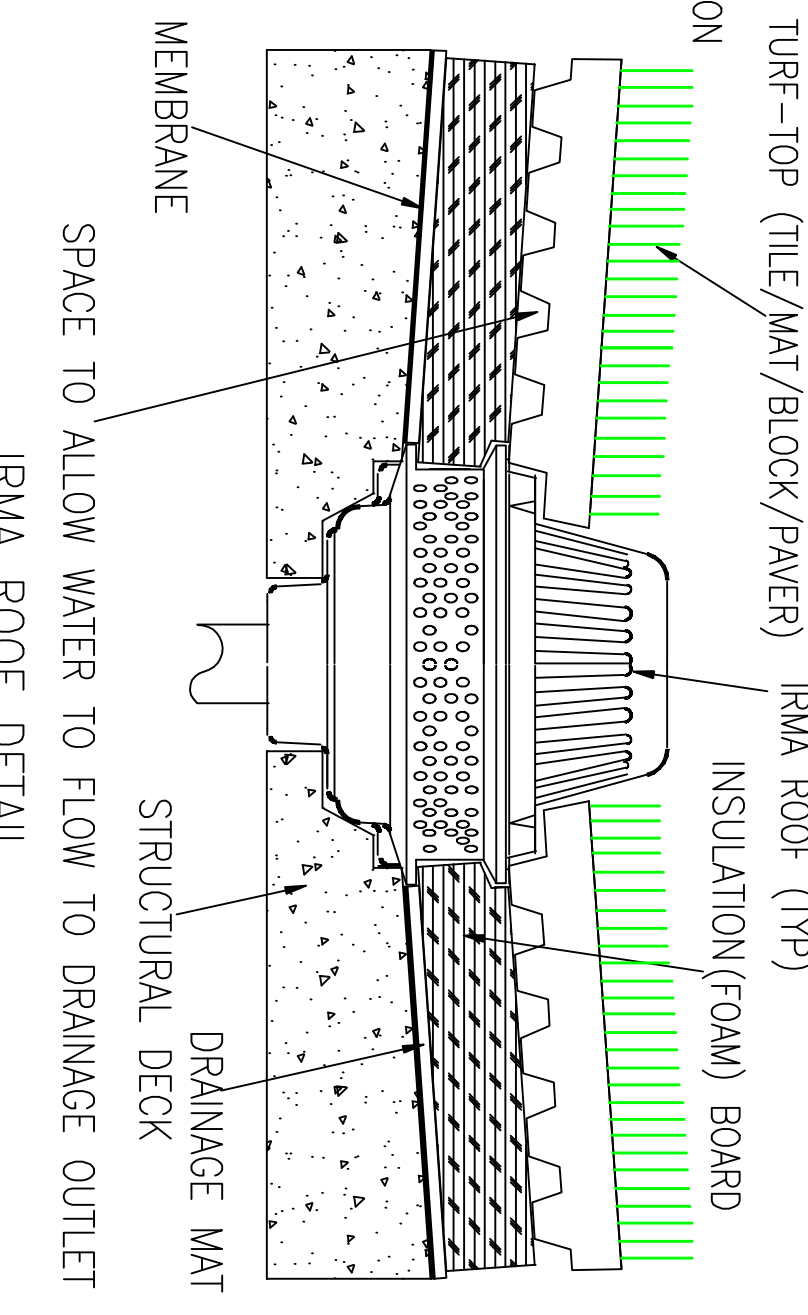
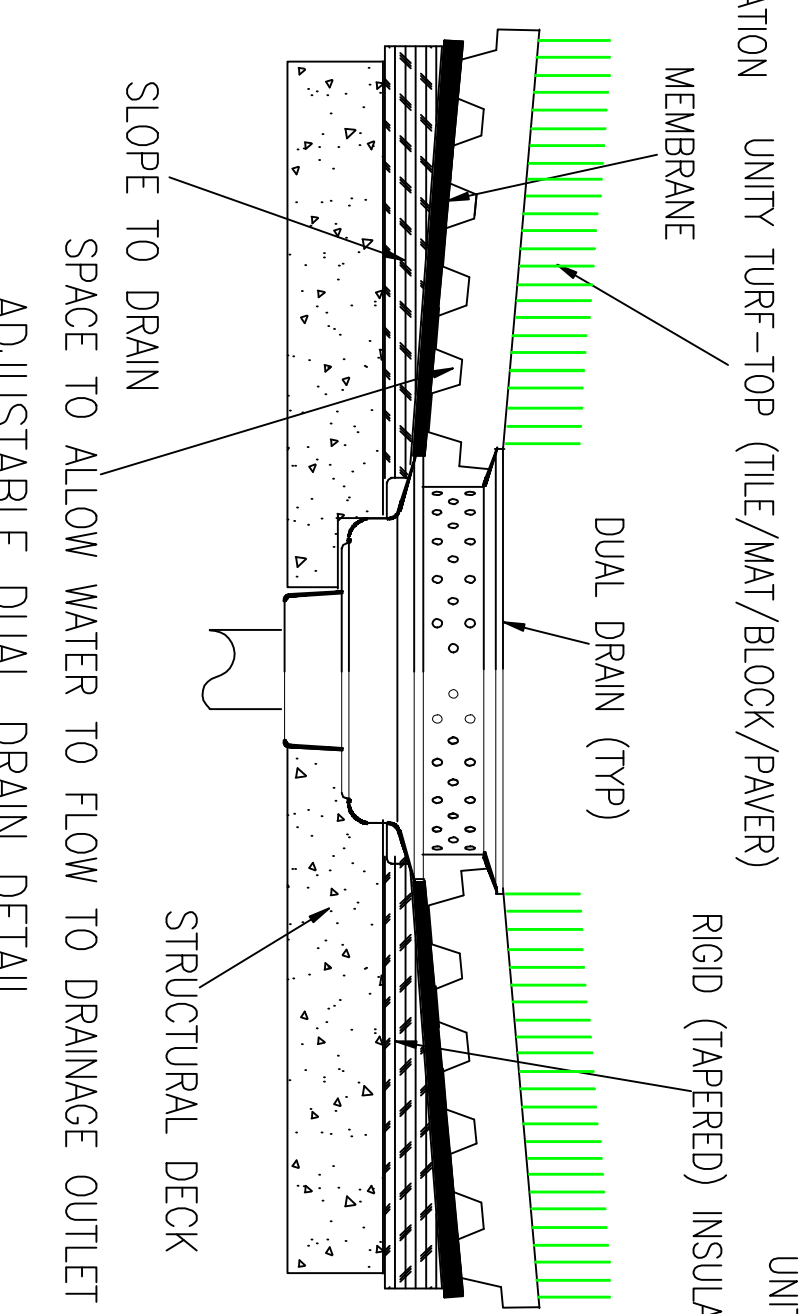
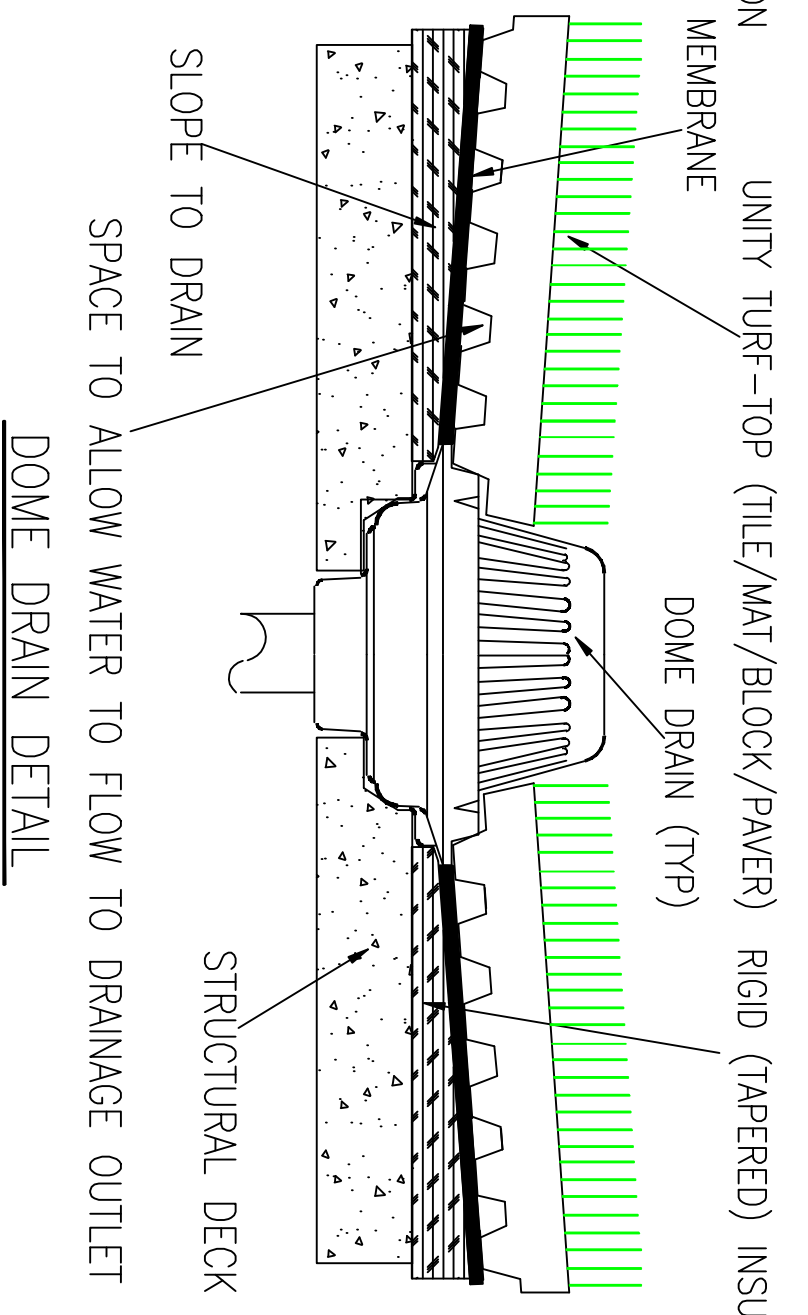
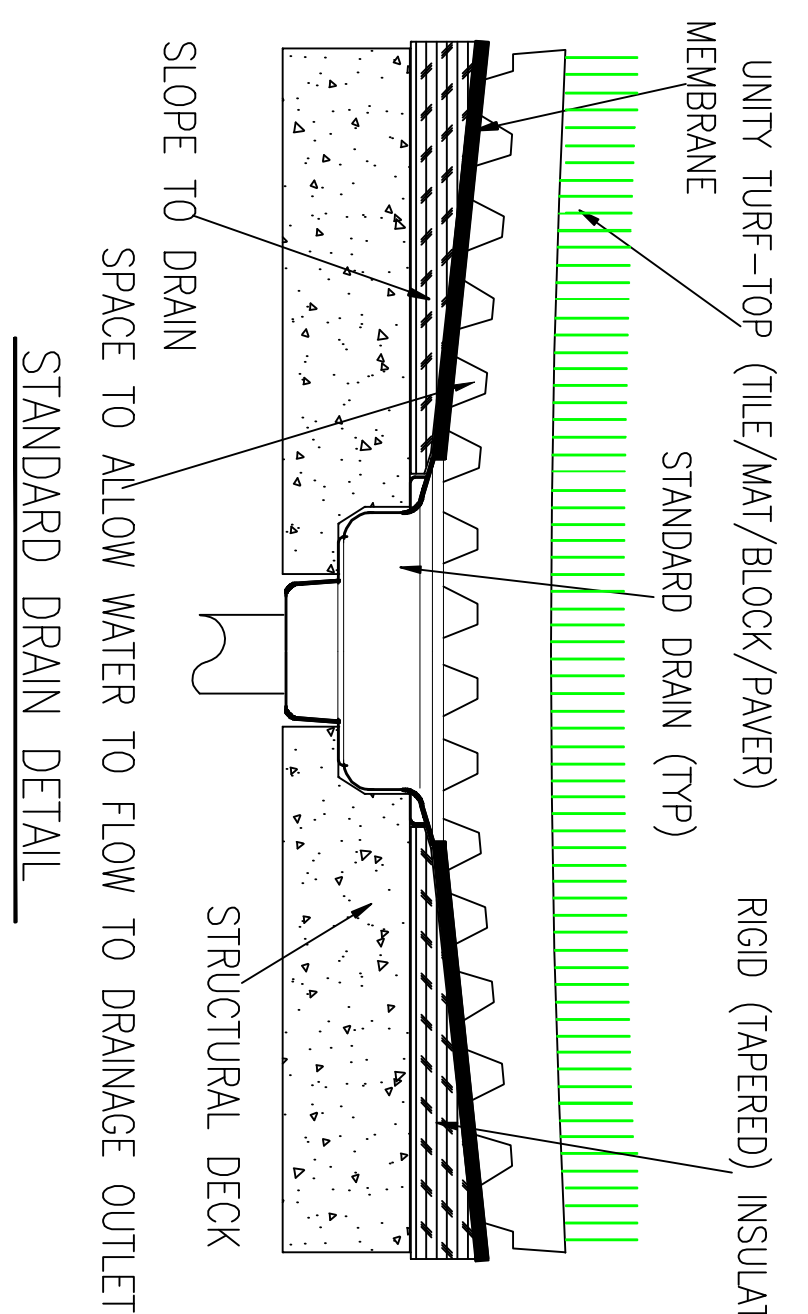
ENLARGED INTERLOCK JOINT DETAIL



SIDE VIEW OF RAIL AND/OR FENCE DETAIL



SIDE VIEW OF FASCIA AND/OR BORDER DETAIL



General Notes

BALLAST RUBBER PAVER PRODUCT DETAILS  
NO FASTENERS, MINIMUM-10 LBS PER SQ FT

No.	1	ORIGINAL	1/23/20
Revision/Issue			
Date			

UNITY CREATIONS LTD./UNITY SURFACING SYSTEMS  
SALES & MARKETING:  
56 BLOOMINGDALE RD,  
HICKSVILLE, NY 11801  
T: (1-877) 41-UNITY  
F: (845) 246-1700  
E-MAIL: [productinfo@surfacingssystems.com](mailto:productinfo@surfacingssystems.com)  
WEB: [www.surfacingssystems.com](http://www.surfacingssystems.com)

MANUFACTURING PLANT:  
UNITY CREATIONS, LTD.  
3997 ROUTE 9W (P.O. BOX 9)  
SAUGERTIES, NY 12477

PROJECT:  
DATE  
SCALE: NOTED

Project: \_\_\_\_\_  
Date: \_\_\_\_\_  
Scale: NOTED