

Unity™ Surfacing

Manufacturing Rubberized Safety Surfacing, Flooring and Paver Products.

ARCHITECTURAL & BALLAST ROOFING PAVERS



TURNING EMPTY ROOFTOPS INTO USABLE SPACES



RESIDENTIAL • COMMERCIAL • INDUSTRIAL • INSTITUTIONAL



Printed on recycled paper. Copyright 2026, www.UnitySurfacing.com, Unity Creations. Ltd. All rights reserved. Image: Memphis, TN.

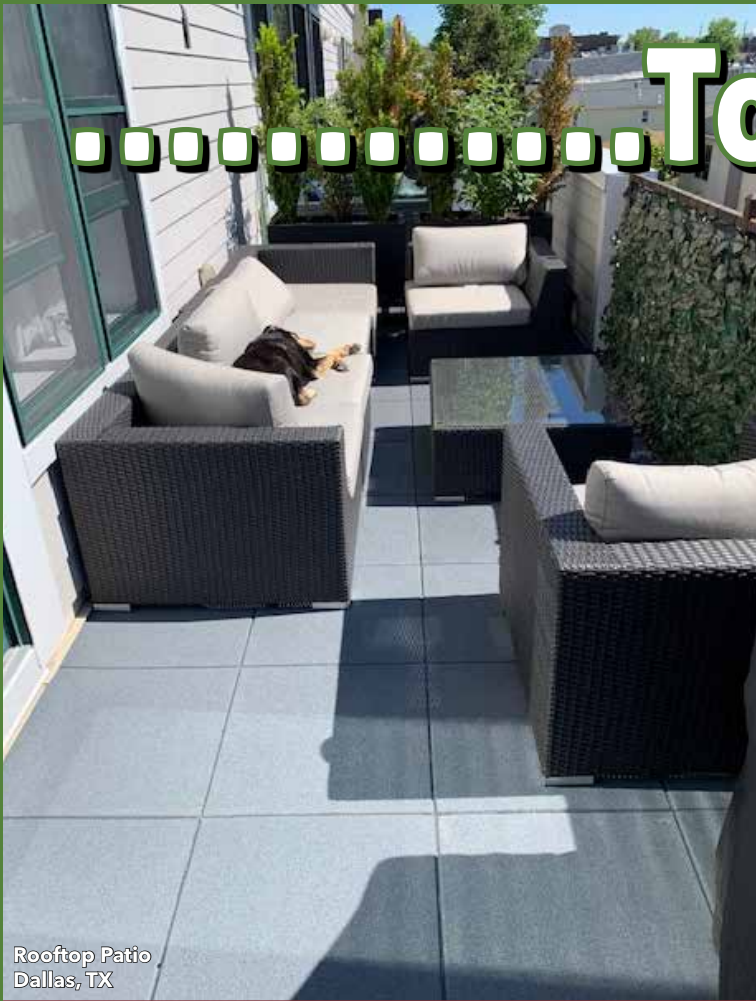
From Waste Tires.....



From Virgin Rubber...



.....To Recovery



Rooftop Patio
Dallas, TX

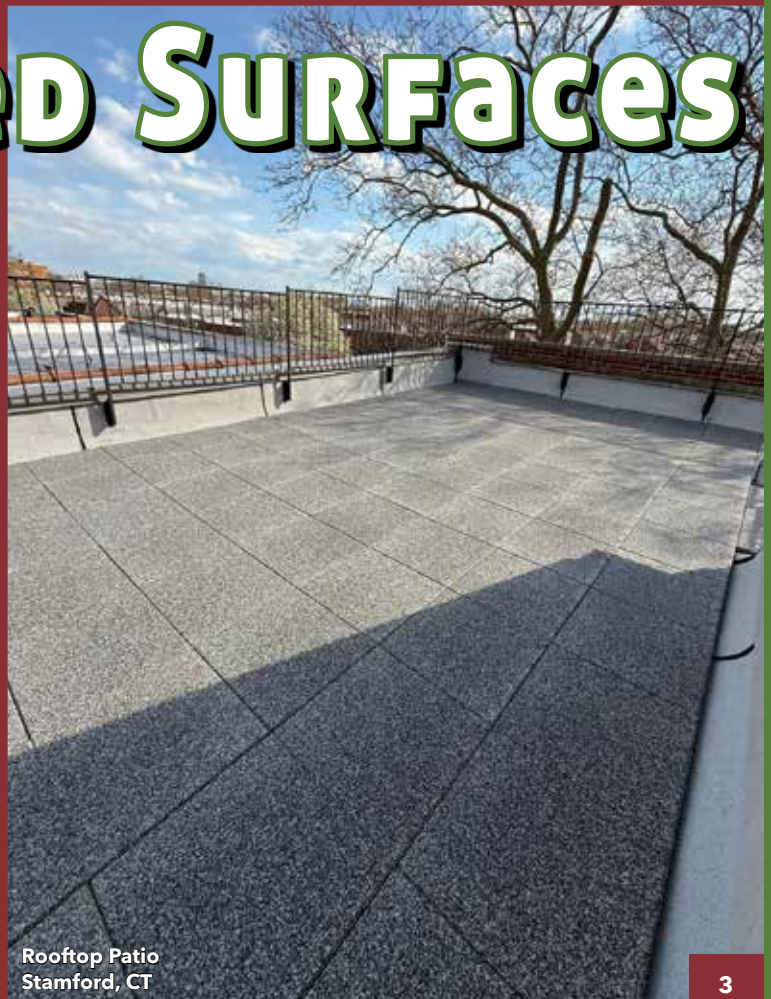


Rooftop Playground
Newark, NJ

..To Finished Surfaces



Recreational Turf-Top Tiles
Philadelphia, PA



Rooftop Patio
Stamford, CT

THE SAFETY SURFACING, FLOORING & PAVER SOLUTION

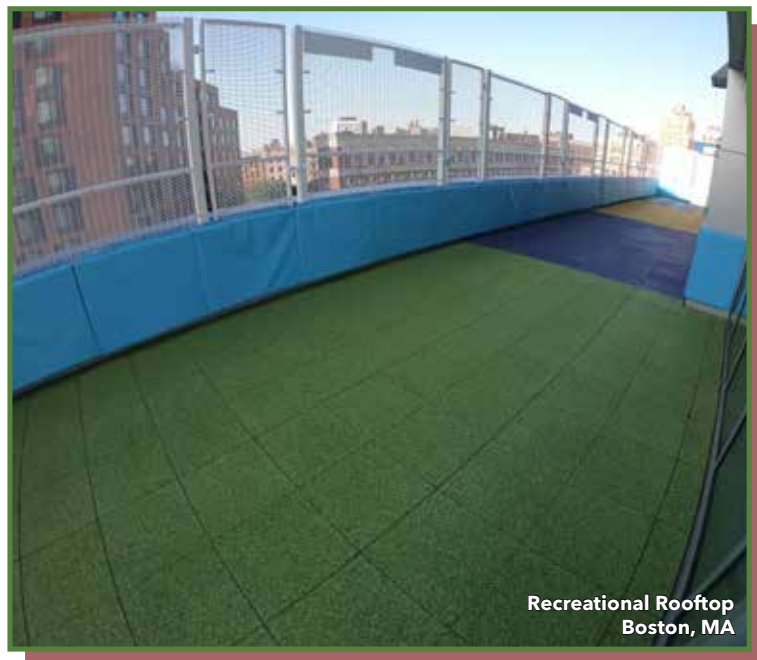
Unity's products are engineered and manufactured using the highest-quality, safest materials available, sourced through our sister company, which recycles tires and processes virgin rubber in-house. Since 1987, we have been a manufacturing leader, developing and patenting superior, resilient products made from either recycled tires or clean, safe virgin rubber suitable for nearly any environment. Our innovative designs and unique product features provide an unparalleled advantage over competing solutions in the industry.



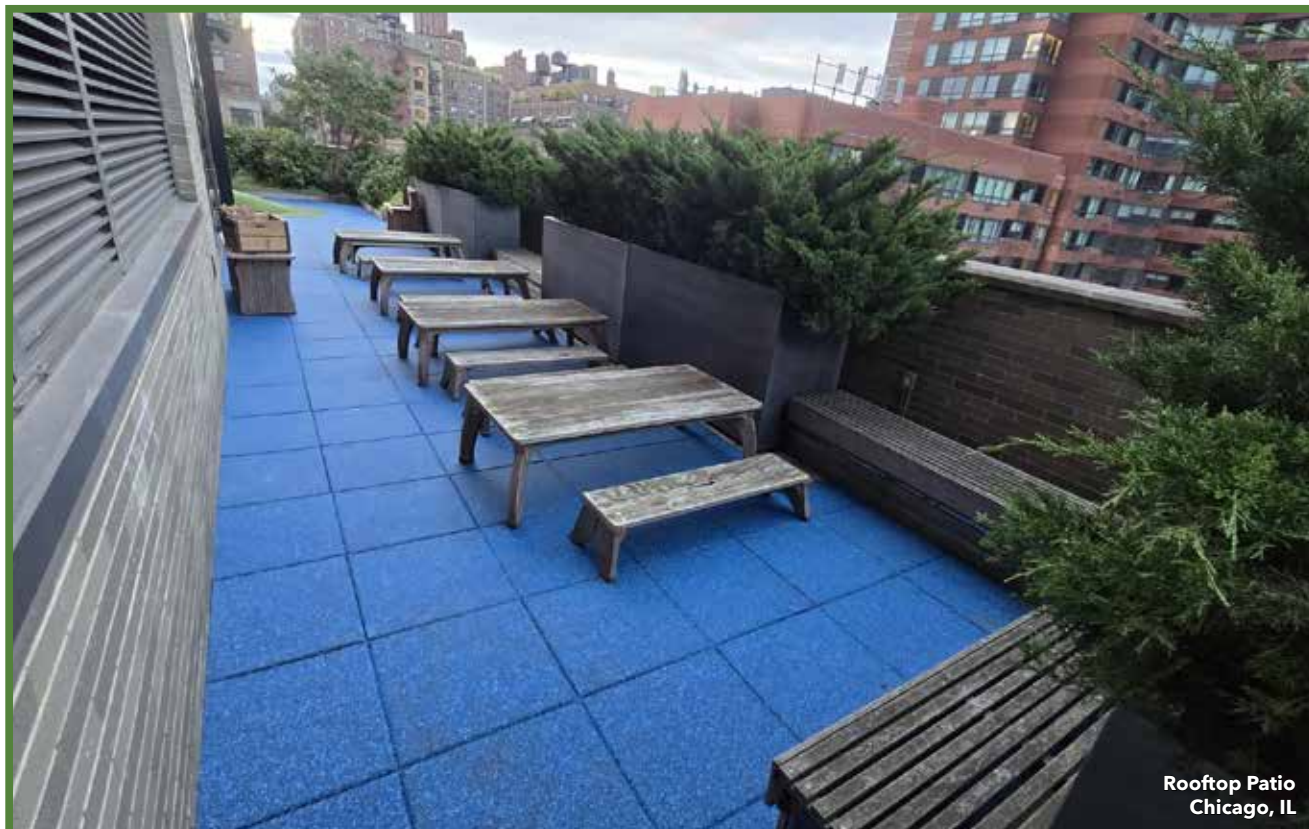
SAFETY, QUALITY, DURABILITY, PERFORMANCE & LONG TERM VALUE DEFINE UNITY'S PRODUCTS

The Advantages to our system over other on the market today include:

- *Excellent drainage*
- *Very stable footing*
- *Low life cycle costs*
- *Will not decompose*
- *Provides noise reduction*
- *Diverse finish (top) options*
- *Wind Resistance protection*
- *Easy Cleaning/Maintenance*
- *Consistent shock absorbency*
- *Will not displace during usage*
- *Attractive appearance/finishes*
- *Thermal and Mechanical protection*



The substantial size and weight of our products—combined with their durability, interlocking design, built-in pedestal system, and our specially formulated one-part adhesives—provide exceptional resistance to premature wear, wind uplift, and leg fatigue. Unity's resilient tile, mat, and paver system conforms to nearly any sloped waterproofing membrane, whether existing or newly installed. It also delivers effective noise reduction, as demonstrated in the rooftop patio application shown below.

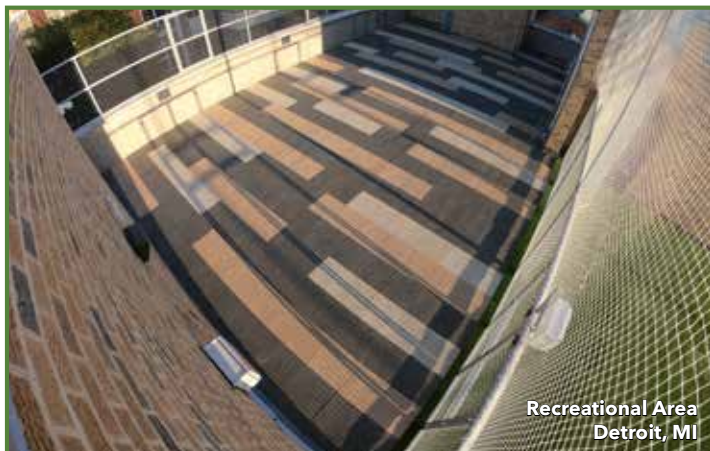


Rooftop Patio
Chicago, IL

“ Good Morning Team,
Excellent Job @ the Easton, and great staying in the 2 day install window. The recreational surface looks great. Moving the Easton team to BCC to spare in boxes and adding the OCH team to indicate: Job well done. Thanks!

– Chris

”



Recreational Area
Detroit, MI

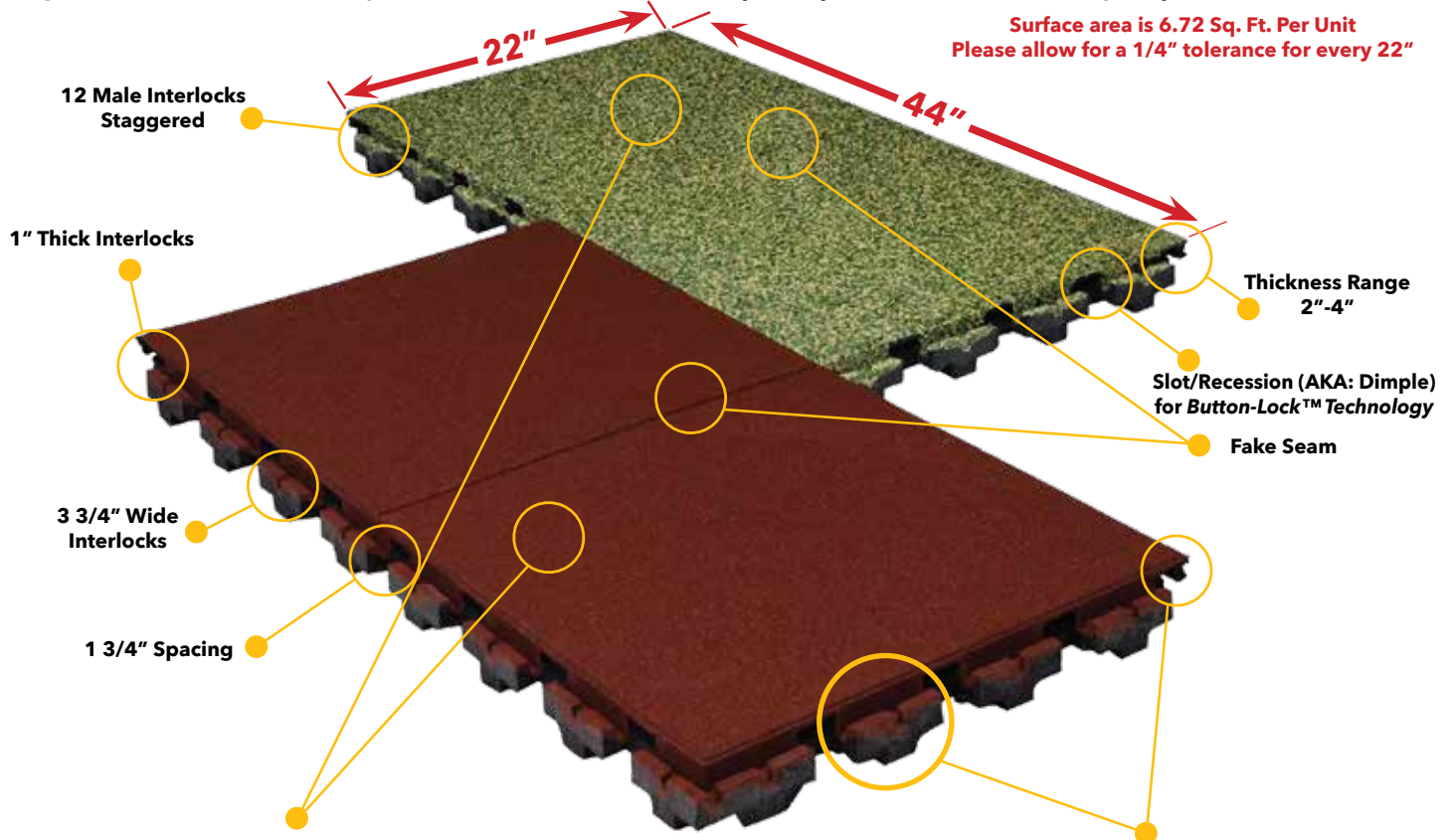


School Roof
Trenton, NJ

Space is the most valuable asset in most major cities. There is an increasing demand for our products to be installed on rooftops and indoors. We take great pride as a manufacturer who has passed several types of Class "A" Fire Tests, including modified versions specifically designed for these applications, making our products superior for such installations. If required, other "fire rated" versions are available prior to ordering.

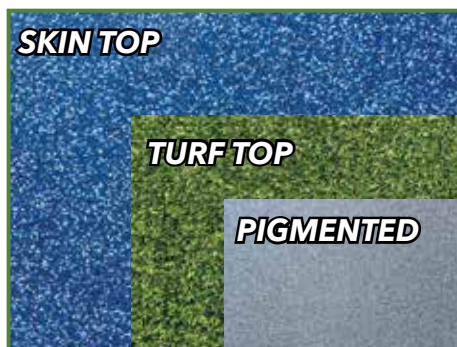
PRODUCT SPECIFICATIONS - TOP SIDE

Unlike traditional rubber roof tiles, Unity incorporates a flexible, double tile/mat/paver system featuring a simulated (fake) seam down the center. This design allows the product to accommodate minor low-slope variations in roof membranes. Our resilient double-panel construction creates a monolithic "Step & Repeat" pattern that aligns real seams with simulated (fake) ones, similar to installing "brickwork". These engineering advancements enhance resistance to separation, curling, peeling and wind uplift throughout the roof assembly. The simulated seams help keep real seams securely in place.

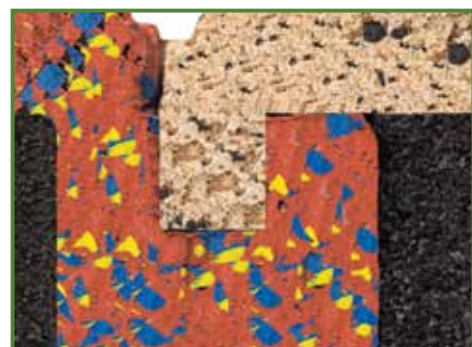


HIGH DENSITY WEAR TOPS

SELF INTERLOCKING DESIGN



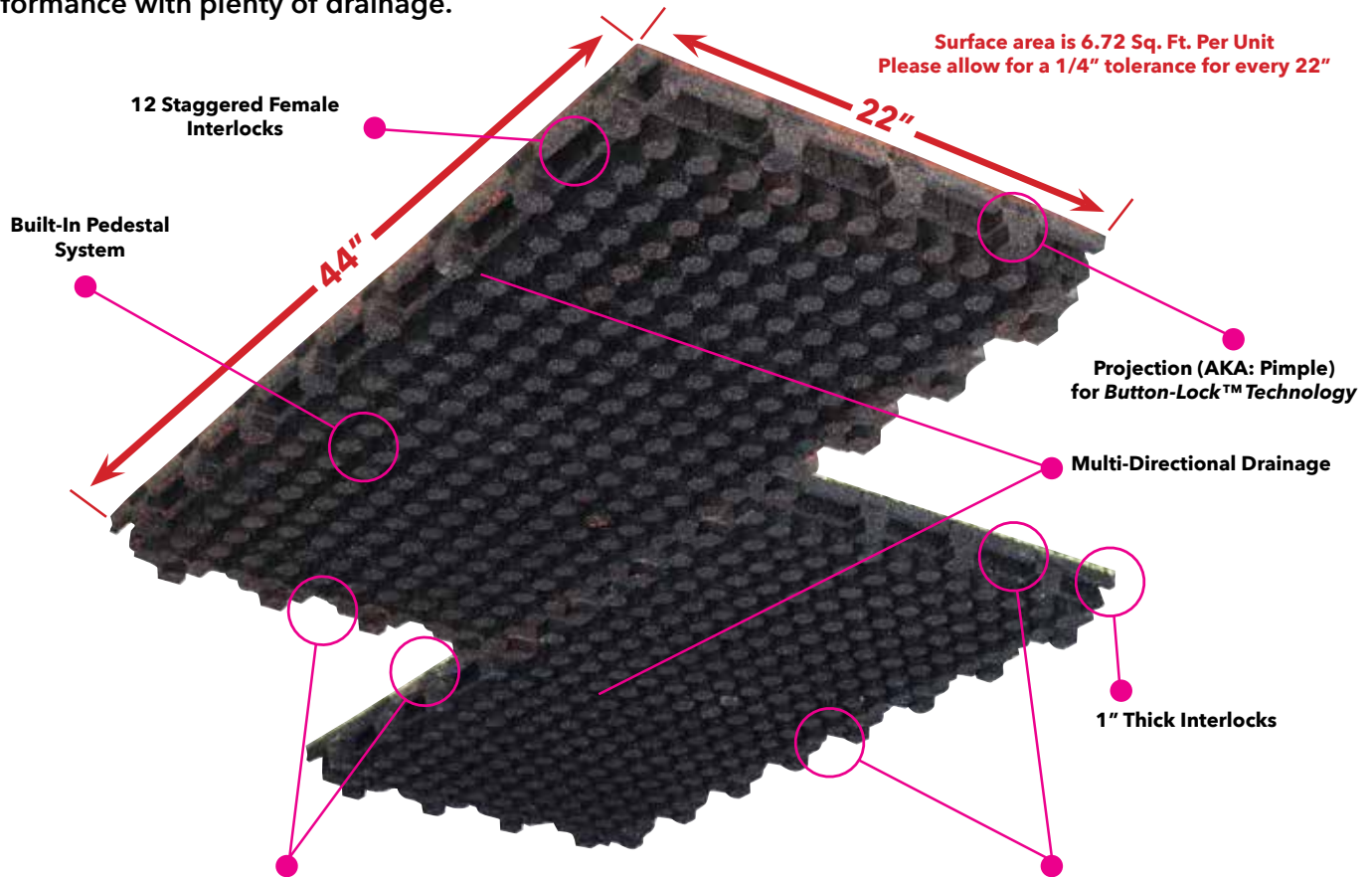
Our wear-top is manufactured using recycled rubber combined with a wide range of slip-resistant pigmented, optional TPV chips and Turf top materials, all bound with our specially formulated adhesives. These high-density, textured wear-top options are exceptionally resilient and will not crack, puncture, or heave even under the most extreme weather conditions. This unmatched versatility ensures reliable, year-round performance for the end-user.



Our patented, double C-shaped self-interlocking design is engineered directly into each product, creating a secure, precision fit. The integrated supporting "back-wall" locks units tightly together, further preventing unnecessary separation, curling, peeling and/or shifting - even in high-traffic or high-vandalism environments. When combined with our specially formulated adhesive, the system delivered exceptional long-term stability while still allowing easy, unrestricted access for maintenance needs.

PRODUCT SPECIFICATIONS - BOTTOM SIDE

From the bottom view, you can see our solid coned (foot/leg) design, which functions as a built-in shock absorber, helping to reduce impact from falls onto the surface below. As a water-permeable system, it also supports effective stormwater management by allowing water to flow freely and evenly toward drainage outlets when installed over crushed stone or a solid sub-bases such as concrete, asphalt or any roofing membrane systems. In addition, our engineered design eliminates common issues found in competing products, such as "hard spots" and "picture framing" - ensuring a smoother, more uniform surface performance with plenty of drainage.

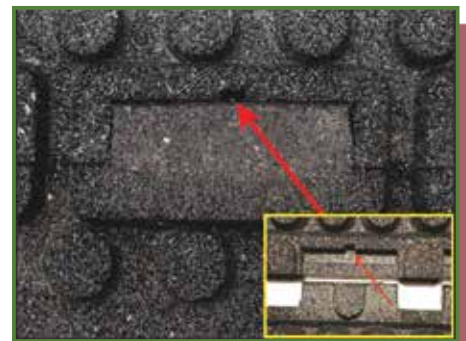


BUTTON-LOCK™ TECHNOLOGY



A breakthrough in surface technology, our patented "Button-Lock" system features a precision-engineered projection on one tile that fits seamlessly into a corresponding slot on the next. This innovative design allows each piece to literally "snap and hook" into place, adding a proven layer of safety and performance for the end user. The result is one of the most secure installation systems available on the market - delivering exceptional stability during "pull-force" situations, both horizontally and vertically.

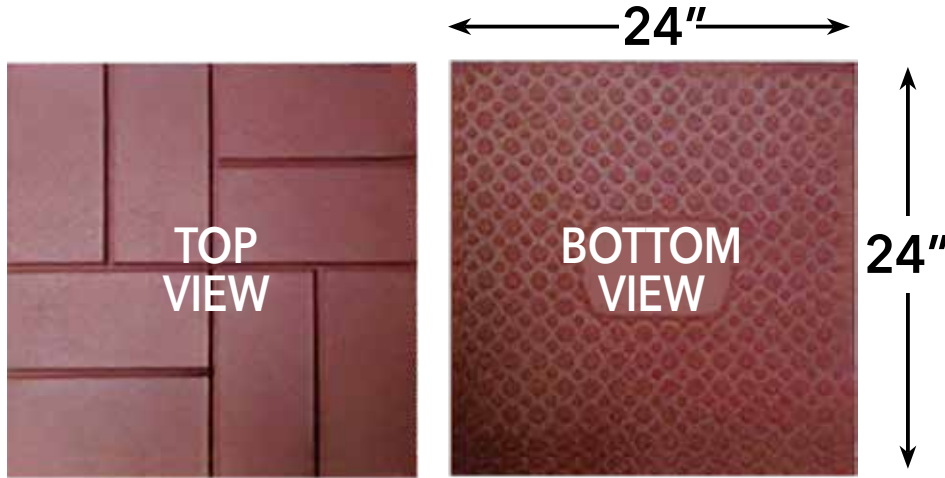
GLUE RESERVOIR



Our exclusive "Glue Drainage Port" is the only patented system on the market, engineered to channel excess adhesive out and away from the finished surface during installation. This innovation directs overflow downward, preventing glue from seeping onto the top layer of the product. This results in a clean, professional finish - eliminating the risk of unsightly adhesive marks or tracking caused by inexperienced contractors or installers.

PRODUCT SERIES: THICKNESSES

TOUGH-LAND TILES MATS BLOCKS



Available from 1/2", 3/4", 1" and 1 3/8" thick, with Brick or Tile top/face/finish.



HANDICAPPED ACCESSIBILITY



Rooftop areas – or any surface, flooring, or paver installation with uncontrolled access – can greatly benefit from a unitary rubber paver system to ensure the highest level of safety. This solution not only enhances protection for users but also significantly reduces the maintenance costs typically associated with heavy concrete/porcelain pavers that sits on a pedestal system or traditional wood decking.



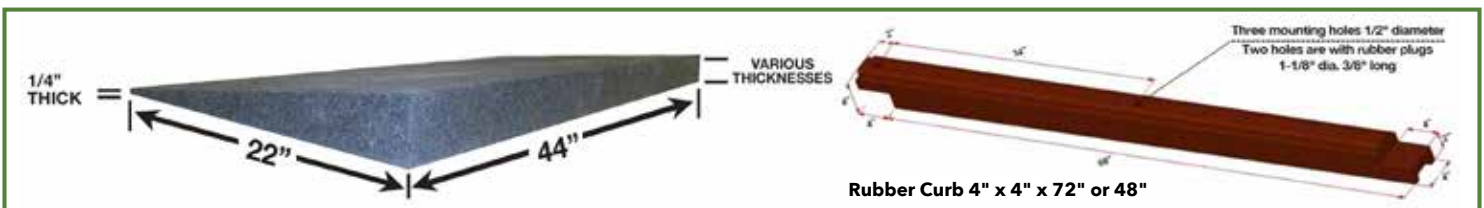
ADA Accessible Rooftop
Bridgeport, CT



ADA Doorway
Toronto, Canada

Increasingly, agencies recognize that all public facilities must be fully accessible. Since the passage of the Americans with Disabilities Act (ADA) in 1991, many spaces have been designed or modified to provide people with disabilities the opportunities to participate in everyday activities. Unity's Products make it easy for everyone - whether using strollers, crutches, wheelchairs, canes or walkers - to navigate safely and comfortably. All of our products are engineered to meet ASTM Accessibility-Rotational Penetrometer standards ensuring reliable access and mobility for users of all abilities.

FINISHED EDGING: TRANSITION RAMPS/BORDER GUARDS (RUBBER CURBS)



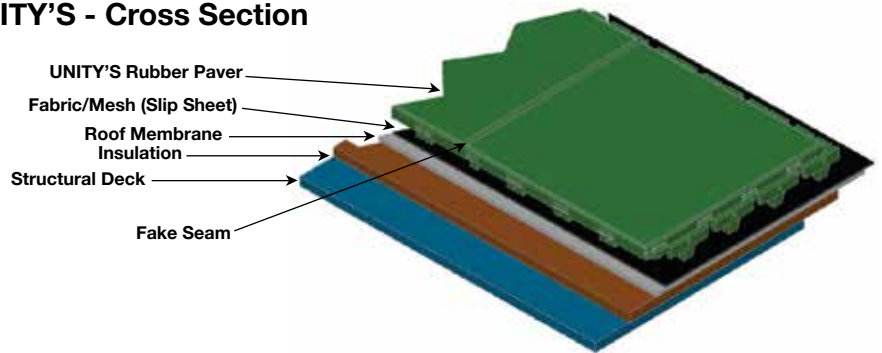
Rubber Curb 4" x 4" x 72" or 48"

When walls, fences, curbs, parapets, or other edging systems are not present, our transitional ramps and rubber curbs provide an ideal solution to create a complete finished look. Designed for easy access to any surface or flooring area, these ramps are available in a wide range of finishes, colors and thicknesses to suit any project requirements.

SUB-SURFACING/Base Options

With a life expectancy of 20-years or more, when properly maintained, our products perform best when installed over a standard roof membrane or insulation boards with a slight pitch for drainage. They are also compatible with a variety of other surfaces options, including concrete, asphalt, crushed stone, quarry stone, wood decking, roofing systems, or any standard indoor/outdoor flooring that is free of stress cracks and/or leaks.

UNITY'S - Cross Section



STANDARD FINISH CHOICES (TURF, EPDM/SKIN, PIGMENTED)

All of Unity's interlocking, unitary rubberized safety surfacing, flooring and paver products are made in-house using recycled tire buffing, crumb rubber granules and virgin rubber, blended with a clear urethane. All finishes are created by combining dyes, TPV chips and Turf ensuring that the outcome is evenly dispersed throughout the top layer for long-lasting vibrancy. A wide range of finishes and colors is available, including: Turf, Std Black, TPV Blends, Splash Design, pigmented options, such as: Nut Brown, Leaf Green, TC-Red, Silver Grey, Sky Blue, Brown-Beige and Mystic White.



Artificial Turf-Top Standard Black Blended TPV Top Splash Design Nut Brown Leaf Green Terra Cotta Red Silver Grey Sky Blue Brown-Beige Mystic White

UV Stabilization Chart

20+ Years

3- Years

As with all recycled rubber products using pigments, minor natural residue transfers is an inherent and ongoing characteristic of the material and is not a defect.

STANDARD SKIN-TOP BLENDS

Our innovative new Skin-Top tiles brings rubber surfaces to life, creating a mesmerizing dance of color blends that shifts beautifully with each step. Offered in eighteen (18) curated palettes, this refined surface enhances any design with a finish that responds as remarkably as it endures. You can also create a custom blend as well, please contact us for more details.



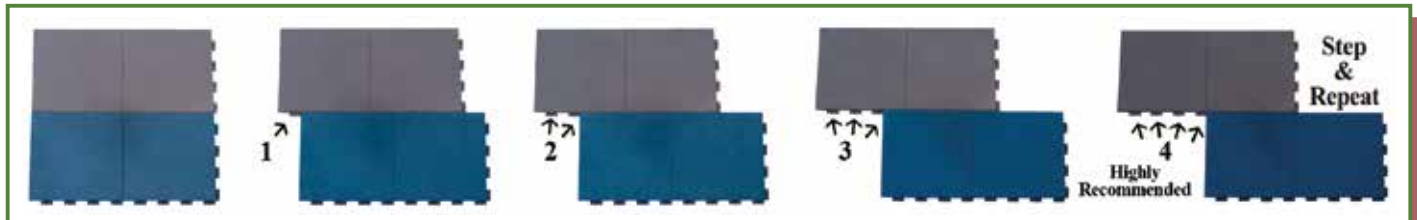
TPV CHIP CHOICES

These TPV chips can be blended using a wide variety of color combinations and proportions, based on the TPV granule/chip chart below. This allows for virtually unlimited design possibilities, making it easy to create vibrant, customized surfaces that complement rooftops, patio's, plaza decks, green roofs and recreational spaces.



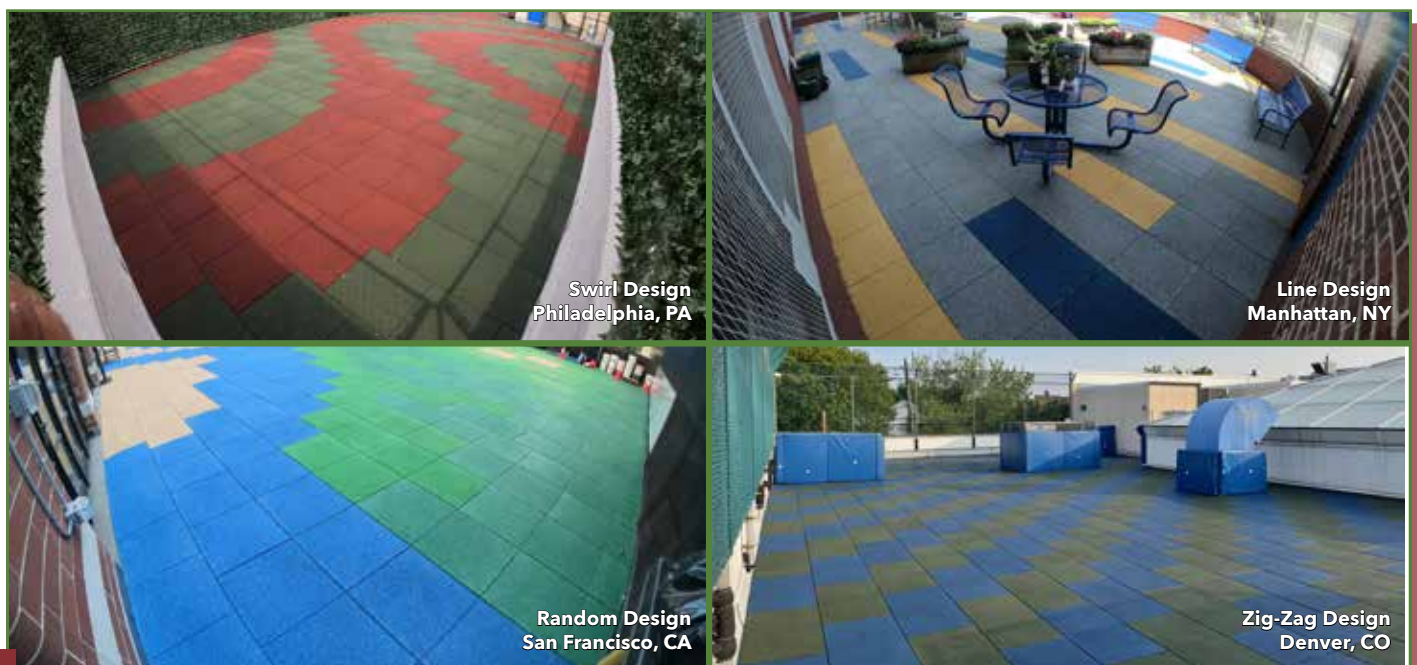
INSTALLATION

Our products fall into the intermediate category in terms of installation difficulty, with most projects completed by professional contractors. An "Installation Guide/Manual" is available upon request and is included with every order. Adhesive should be applied to a solid sub-base (ground level only) and/or to the interlocks of our products in an "S" pattern (wall of tile at interlock, top of interlock, wall of interlock). Common installation tools include: a utility knife or jigsaw for cutting, a straight edge for precise cuts, a string line and a tape measure.



Our newly developed interlocking system offers versatile installation options, allowing joints and interlocks to be staggered anywhere. This flexibility makes it easy to create free-flowing designs, layouts, and patterns with minimal effort. Popular installation methods include the "Running Bond" and our signature "Step & Repeat," both of which deliver striking results.

DESIGNS/LAYOUTS/PATTERNS

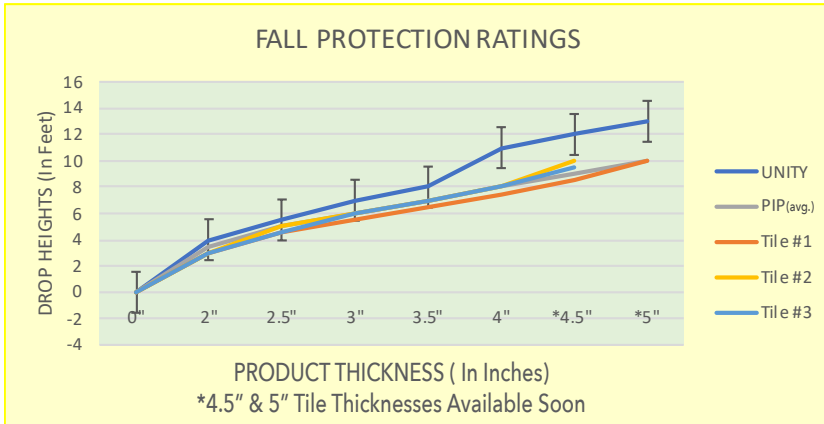


Test Results

IPEMA - DROP TESTING



G-MAX & HIC test results conducted at an independent testing laboratory per ASTM F-1292, F-355 Procedure D (ANSI Head-Form C), **Passed**



Weathering (Aging) Tests
Test results conducted at an independent laboratory per ASTM C-67, & ASTM D-573, **PASSED**

Skid Resistance Test
Test results conducted at an independent laboratory per ASTM E-303, **PASSED**

Fire Resistance Test
Test results conducted at an independent laboratory per ASTM E-108 & E-648, **PASSED**

Thermal Conductivity (R-Value)
Test conducted at an independent laboratory per ASTM C-518-98, **PASSED**

Reflectance/SRI & Emittance Test
Test conducted at an independent laboratory per ASTM E-903, E-891 and E-1980, **VARIES**

Wind-Uplift Test
Test conducted at an independent laboratory per ANSI 4474 & ASTM D3161, **PASSED**

Impact Resistance Test
Test conducted at an independent laboratory per UL 2218, Class 4, **PASSED**

These rigorous tests demonstrate the value of choosing a safe, compliant roof cover and help protect against potential legal issues arising from improper surfacing. Unity's products meet or exceed ASTM, ADA, CPSC, and IPEMA standards, outperforming competing products on the market. We also offer a wide range of additional test results – please inquire to learn more about our comprehensive certifications.

WARRANTY

Thanks to the exceptional durability of our safety surfacing, flooring and paver system, every product manufactured by Unity Surfacing is backed by a comprehensive warranty, protecting your investment against manufacturing defects. Our Warranties are thoughtfully designed to support architects, engineers, project managers, owners, and end-users, helping you maximize both the cost and performance benefits of our system. With Unity, customers receive unmatched value and peace of mind in the industry. For more information, or to request a written warranty, please contact Unity directly.



Recreational Area
Washington, DC

*Custom Blended TPV/EPDM top tiles using 95% Green and 5% Red, with the Boarder Tiles being 95% Red and 5% Green.

BEFORE & AFTER EXAMPLES



Part of an 80,000 sq. ft. project



80,000 sq. ft. spread across 13 buildings



5,500 sq. ft. of Roof Space being converted



Turf-Tiles on Multi-Use Building

ADA

Americans with Disabilities Act

ADA - The Access Board Effective 1992, the Americans with Disabilities Act (ADA), a federal law, prohibits disability-based discrimination by states, local governments, and private entities. The ADA specifically requires that "each service, program, or activity conducted by a public entity, when viewed in its entirety, be readily accessible to, and usable by, individuals with disabilities". The Access Board provides resources, information and guidance related to the ADA, including insight on developing public spaces like rooftops that meet ADA guidelines. Unity meets or exceeds these standards via ASTM-F-1951-21.



ANSI: The American National Standards Institute (ANSI) has served in its capacity as administrator and coordinator of the United States private sector voluntary standardization system. ANSI facilitates the development of American National Standards (ANS) per 4474. It is this standard that establishes minimum acceptable performance specifications for most types of surfacing, flooring and pavers on rooftops. UNITY meets or exceeds these standards as seen throughout our brochure.



ASTM - The American Society for Testing and Materials (ASTM) is the scientific and technical organization chiefly responsible for developing standards for testing different materials. ASTM introduced Standards for Consumer Safety Performance Specifications for Rooftop Applications designated as D3161, C518-98. It is the standard that establishes minimum acceptable performance specifications for most types of surfacing, flooring and pavers applications. Unity meets or exceeds these standards as seen throughout our brochure.



ECOCYCLABLE - Ecocyclable™ is defined as any product being used more than once (i.e. reusable) as the same, or different, recycled product. Unity's safety surfacing, flooring and paver products can be used in many different locations over and over again. We are the only manufacturer to receive such a prestigious symbol.

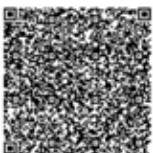


UL: The Underwriters Laboratory (UL) is a global independent safety science company offering expertise across five key strategic businesses: Product Safety, Environment, Life & Health, Knowledge Services and Verification Services. Their breadth, established objectivity and proven history mean they are a symbol of trust and enable you to help provide peace of mind to all. The 2218 principle has been met or exceeded by Unity as seen throughout our brochure.



USGBC - The USGBC (United States Green Building Council) via the LEED (Leadership in Energy & Environmental Design) is the nation's foremost coalition of leaders from across the building industry working to promote buildings that are environmentally responsible, profitable and healthy places to live and work. It is leading a national consensus for producing a new generation of buildings that deliver high performance inside and out. As a member of the USGBC program, using our products will help to achieve up to seven (7) LEED points/credits.

Local Dealer's (Rep's) Business Card Here



Unity Creations, Ltd.
Unity Surfacing Systems
 3997 Rt. 9W (P.O. Box 9)
 Saugerties, NY 12477

T: (1-877) 41-Unity F: (845) 246-1700
 E-mail: productinfo@surfacingystems.com
 Internet: www.surfacingystems.com

At Unity, we are proud that our products combine optimal size, weight, durability and longevity with industry-leading fall protection ratings. Featuring an integrated self-interlocking design for rooftop applications. Our products can be securely installed on-site to maximize wind resistance, while at the same time, reduce vandalism and unwanted maintenance concerns. Everyone at Unity Surfacing thanks you for your interest and looks forward to providing solutions that deliver unmatched performance, safety and value.

www.UnitySurfacing.com

Printed on recycled paper. Copyright 2026, www.UnitySurfacing.com, Unity Creations, Ltd. All rights reserved.