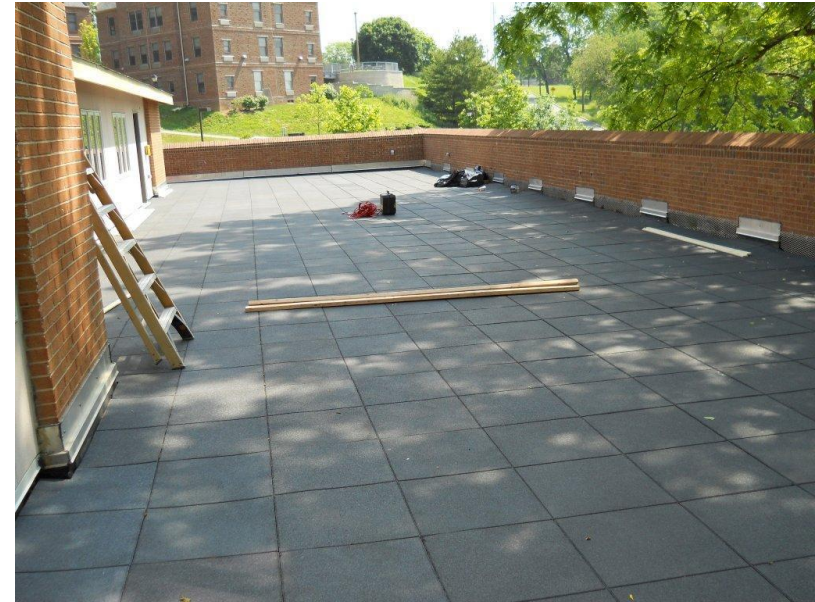


Concrete

vs.

UNITY



- Heavy concrete pavers may result in:
 - Cracked/split concrete pads (i.e. falling icicles, debris, objects, etc.) puncturing the roof membranes
 - Overburden on the weight-load requirements for the roofing system
 - Loss of insulation value
 - Releases 96% more carbon dioxide during manufacturing process.
 - Emission of mercury and other volatile organic compounds into the environment.
 - Loss of USGBC-LEED points/credits
 - Logistics nightmare up and onto the rooftop area in question.