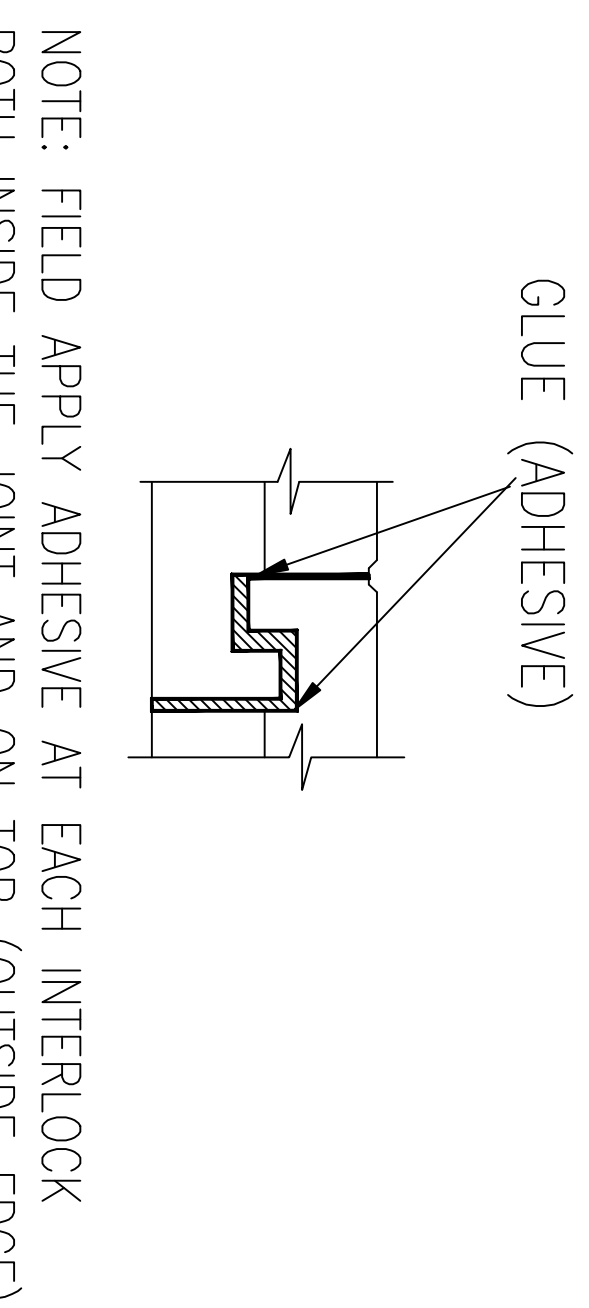
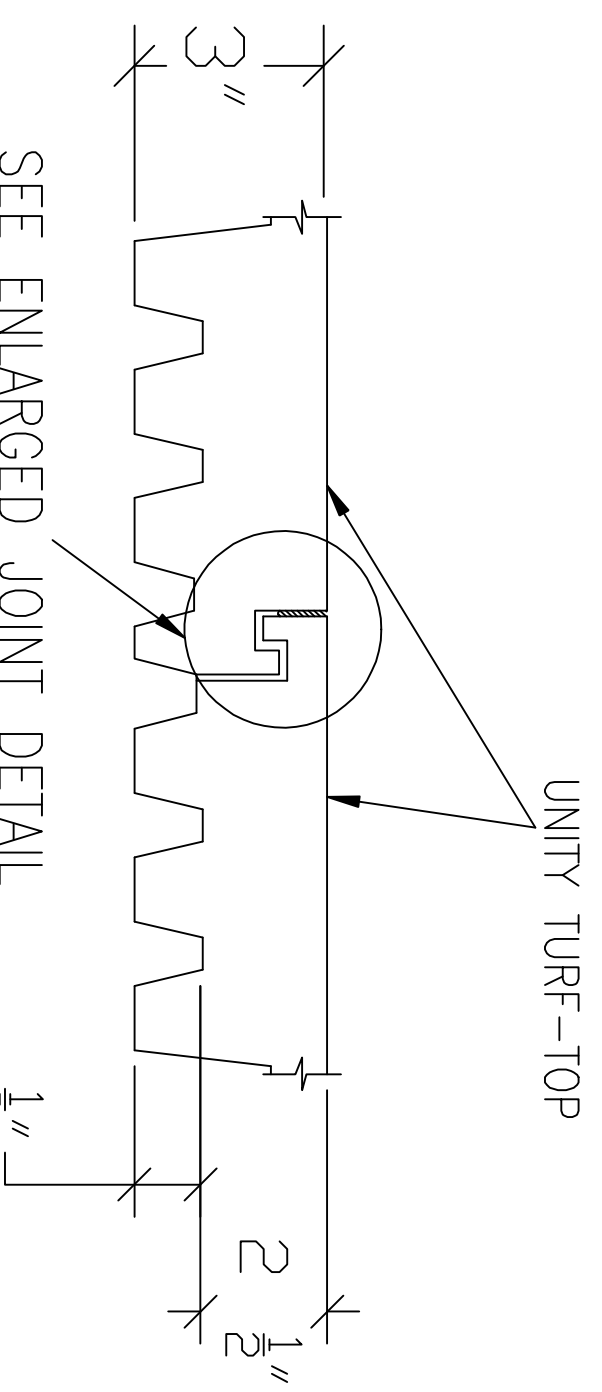
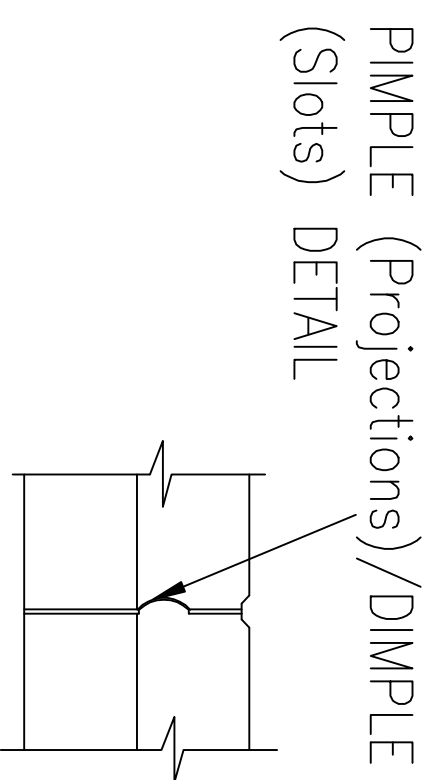


TOP VIEW OF UNITY TILE/MAT/BLOCK/PAVER

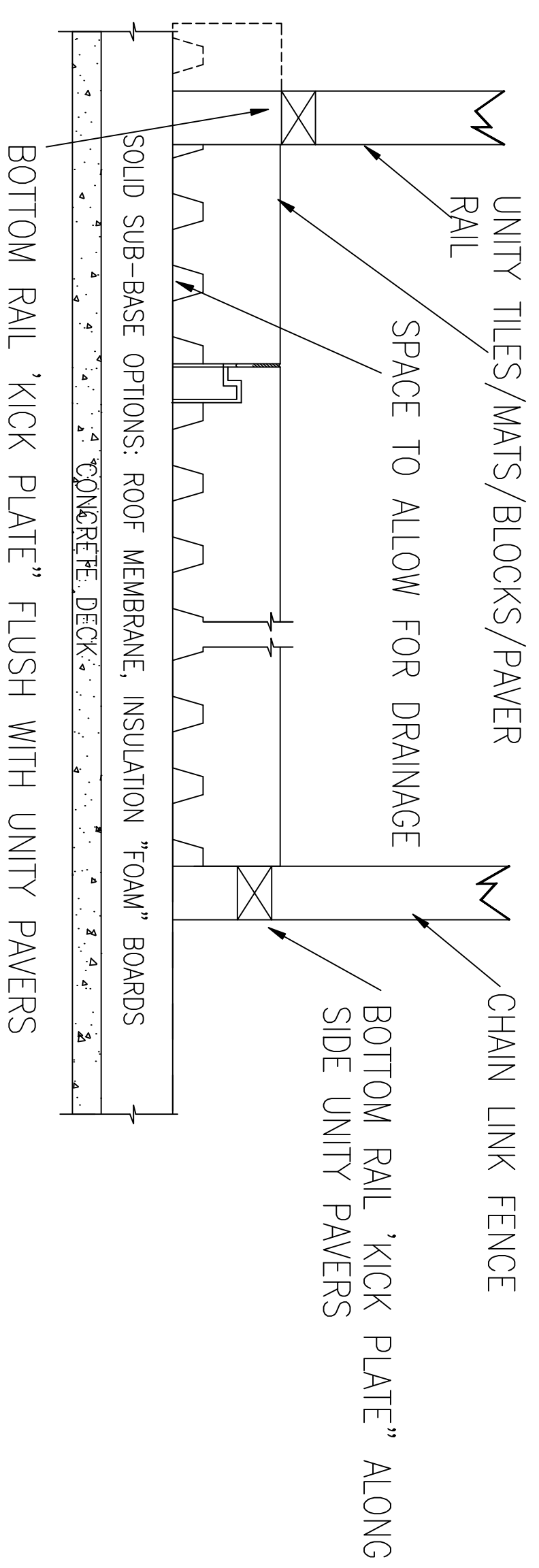
BOTTOM VIEW OF UNITY TILE/MAT/BLOCK/PAVER



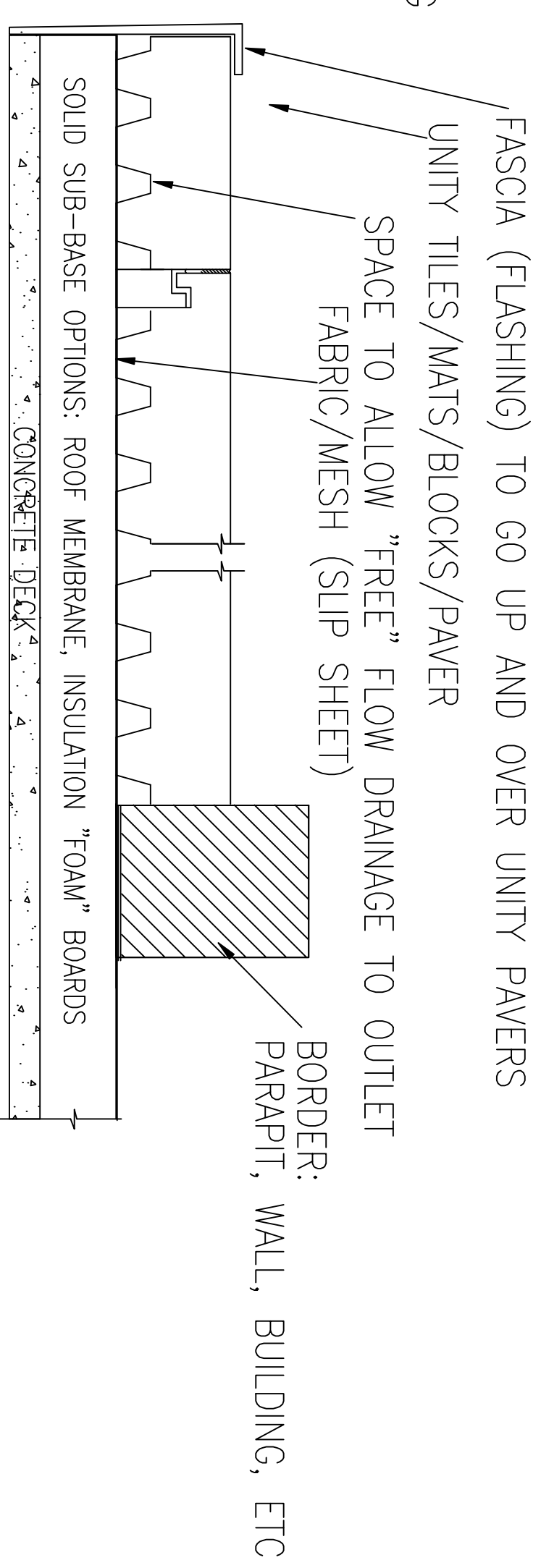
JOINT DETAIL AT PIMPLE (Projections)/DIMPLE (Slots)

TYPICAL TILE JOINT DETAIL

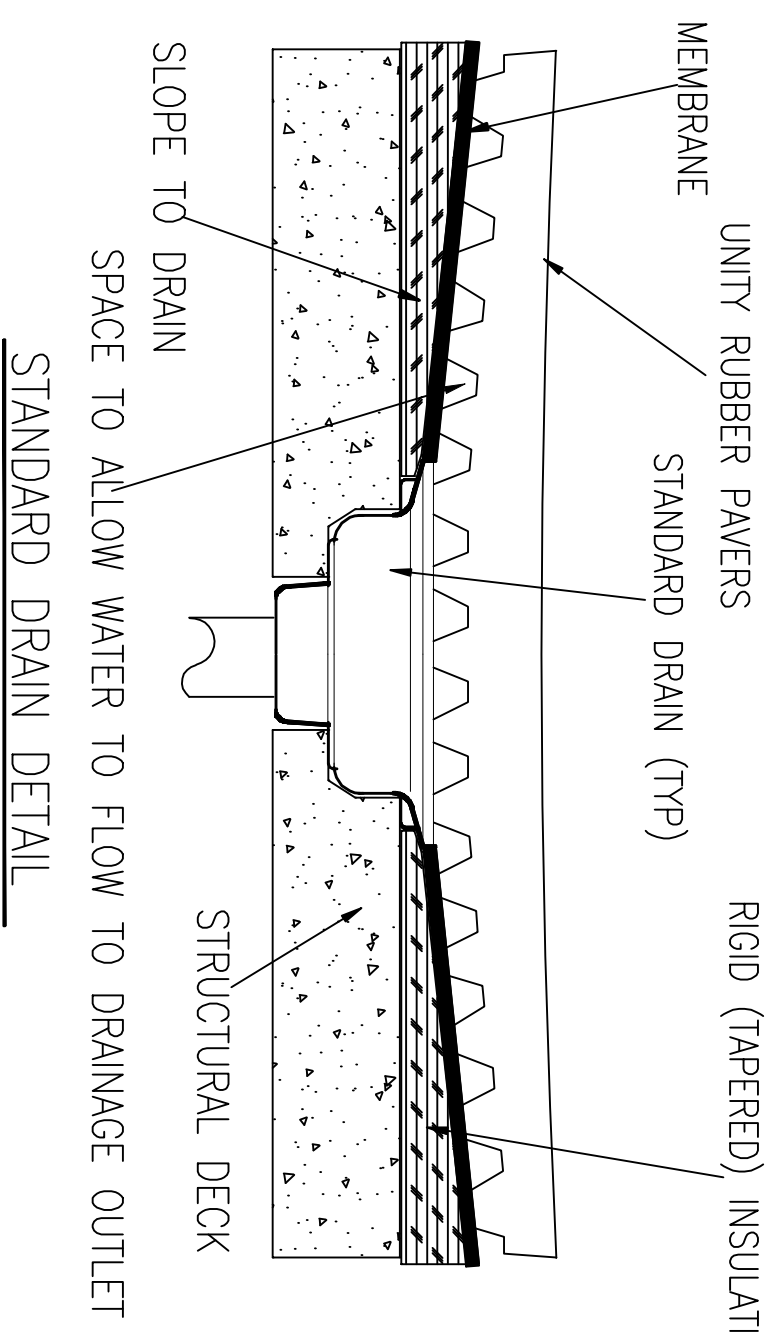
ENLARGED INTERLOCK JOINT DETAIL



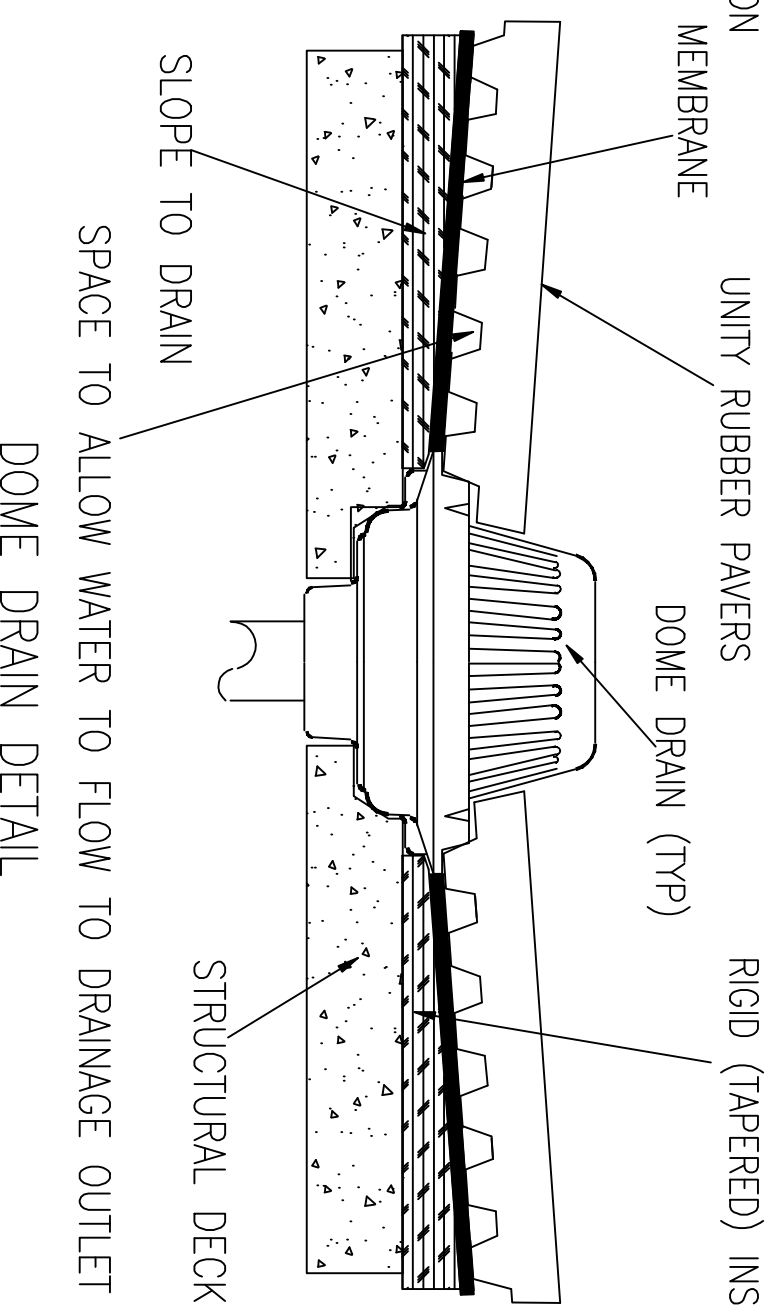
SIDE VIEW OF RAIL AND/OR FENCE DETAIL



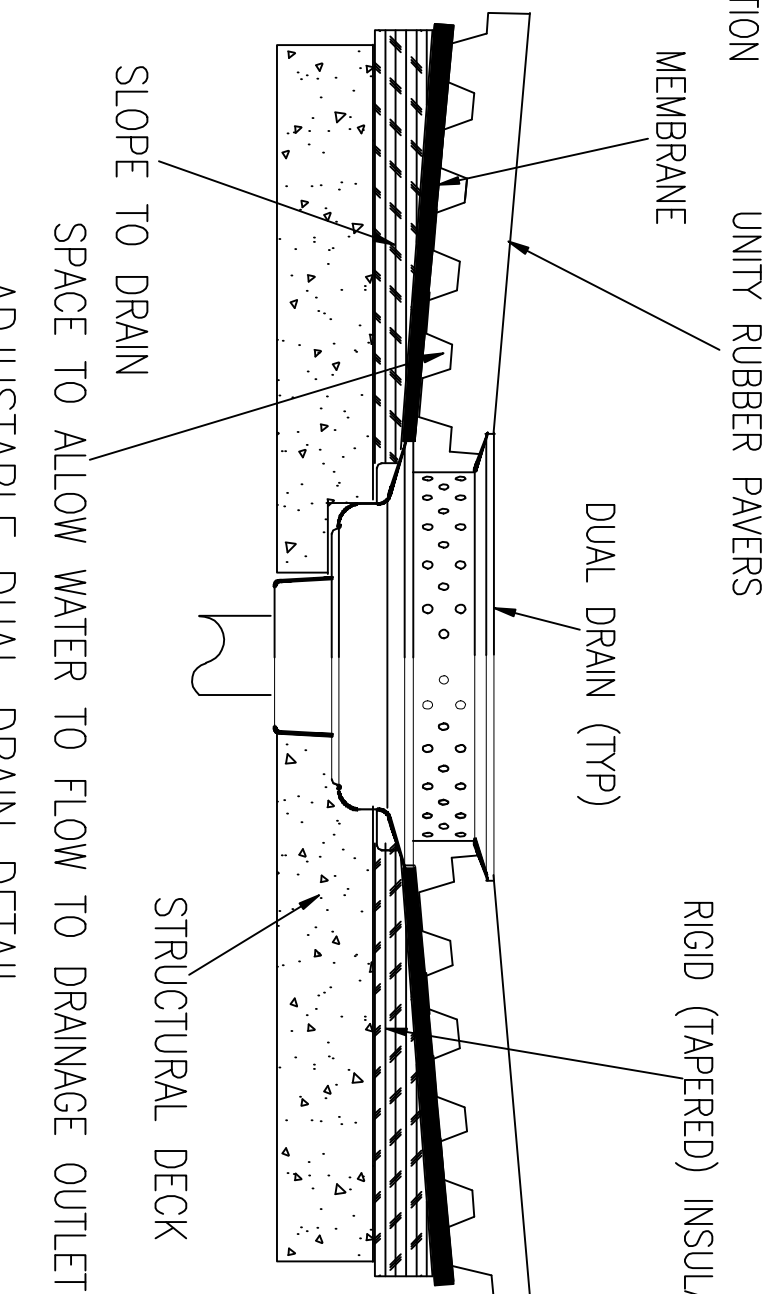
SIDE VIEW OF FASCIA AND/OR BOARDER DETAIL



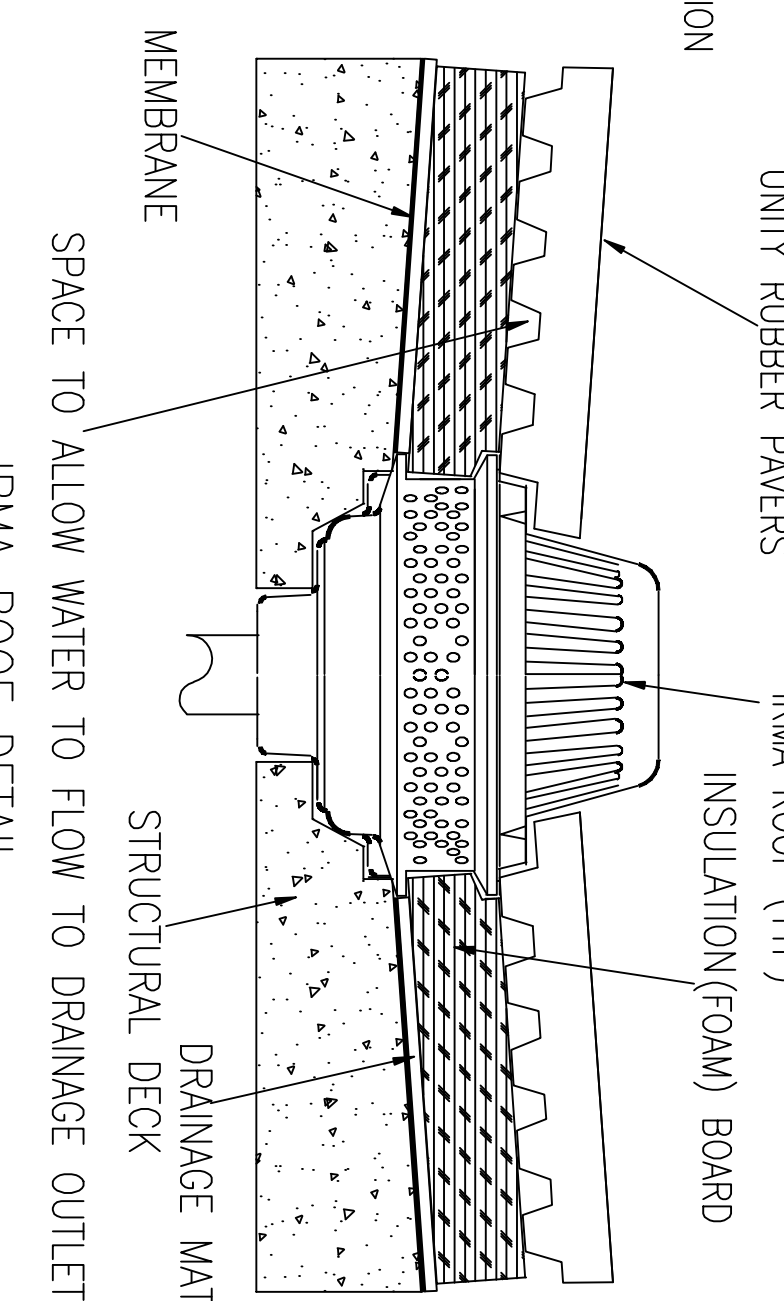
STANDARD DRAIN DETAIL



DOME DRAIN DETAIL



ADJUSTABLE DUAL DRAIN DETAIL



IRMA ROOF DETAIL

BALLAST ROOF TILE-MAT-BLOCK-PAVER PRODUCTS DETAIL

NO FASTENERS, ROOFTOP MINIMUM 10 LBS PER SQ FT

General Notes

No.	Revision/Issue	Date
4	UPDATE	2/15/20
3	UPDATE	8/2/18
2	PATENT UPDATE	11-29-11
1	ORIGINAL	9-24-09

UNITY CREATIONS LTD./UNITY SURFACING SYSTEMS

SALES & MARKETING:
56 BLOOMINGDALE RD.
HICKSVILLE, NY 11801

T: (1-877) 41-UNITY
F: (845) 246-1700
E-MAIL: productinfo@surfacingystems.com
WEB: www.surfacingystems.com

MANUFACTURING PLANT:

UNITY CREATIONS, LTD.
3997 ROUTE 9W (P.O. BOX 9)
SAUGERTIES, NY 12477

PROJECT:

Project	Sheet
Date	
Scale	NOTED