

# Unity™ Surfacing

A Unity Creations Co. Manufacturing Rubberized Safety Surfacing, Flooring and Paver Products

## TOUGH-LAND TILE MAT BLOCK PAVER SYSTEM

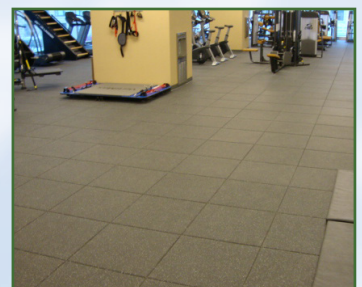
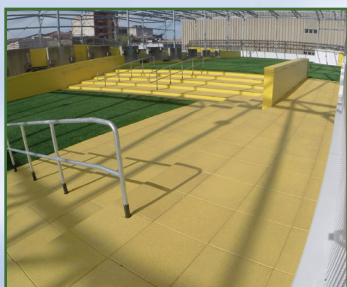
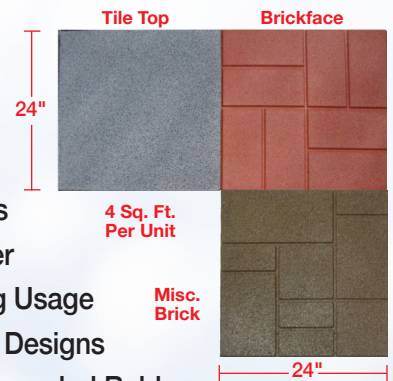
Our 1/2", 3/4" 1" & 1 3/8" Thick Tough-Land Series is designed to meet and exceed all of your project needs for use on athletic areas, fitness facilities, recreational areas, weight rooms, clubs, military bases, gyms and more. It is the foundation for a smart, long-term investment in durability and beauty that will last for years to come.

As the industry leader, the superior raw materials we use, coupled with our proprietary manufacturing process, gives you the strongest, highest quality, environmentally friendly 2x2 rubber tile system available.

All of our products are independently laboratory tested with respect to ASTM, CPSC, ADA and Wind safety standards and guidelines to be installed over new and existing sub-bases and/or rooftops, both indoors and outdoors.

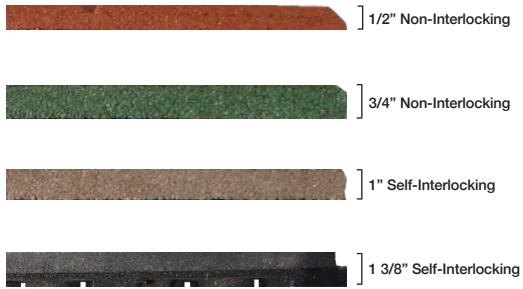


- Easy to install
- ADA compliant
- Indoors and outdoors
- Little To No Maintenance
- With or Without Interlocks
- Acts as an Effective Buffer
- Does Not Displace During Usage
- Solid or Pedestal Bottom Designs
- Made in the USA Using Recycled Rubber
- Built-in Anti-Bacterial and Fungicide Finish
- Excellent Sound And Shock Absorption Qualities
- Gyms, Military, Weight Rooms Fitness Facilities, Athletic Areas

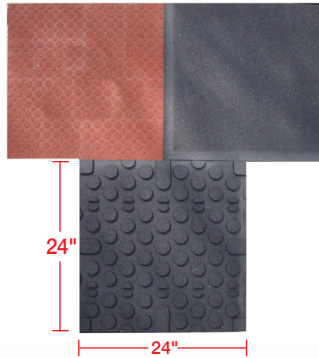


# Technical Information

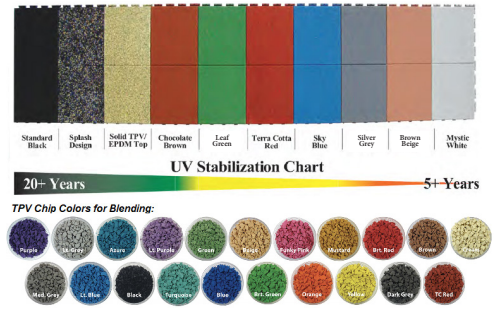
## Thicknesses:



## Bottom View:



## Color Types:



## Testing:

| Testing Criteria:                      | Ref. / Guide:                        | End Result:   | Testing Lab:       |
|--|--------------------------------------|---|--------------------|
| Impact Attenuation                     | ASTM F1292-04                        | Call for Details  | DTL/Element        |
| Weathering/Aging                       | ASTMC67, D573                        | No Deterioration  | TUV                |
| Flamability                            | ASTM E108                            | Class A   | V-Tec              |
| Flamability                            | ASTM E108 for Roof Coverings         | Class A (Burn Stop @ 38 sec.)   | V-Tec              |
| Flamability                            | ASTM E648                            | Class 1 (0.45 watts/cm2)  | Govmark            |
| Burn Pill                              | ASTM 2859                            | 3.7"  | Govmark            |
| Skid Resistance                        | ASTM 303-93 (2013)                   | 67 Wet / 80.25 Dry  | V-Tec              |
| ADA Accessibility                      | ASTM 1951-99                         | 0.26 Firm / 0.28 Stability  | Beneficial Designs |
| R-Value (Thermal Con)                  | ASTM C518-98                         | 0.939 Con./2.4 Res. and <   | SGS                |
| Reflectance/SRI/Emittance              | ASTM E903, E891 and E1980            | 5.1-68.6 %Solar Ref./3-86 SRI   | Atlas              |
| Lead in Materials/Children's Products  | CPSC-CH-E1002-08                     | 2 ppm/ MDL  | SGS                |
| Water Penetration                      | Sustainable Storm Water Mgt./Run-off | 0.13 gal. Body/0.21 gal. Seam   | SGS                |
| Pull Force                             | ANSI/FM 4474 Approval, Appendix B    | 132 lbf Vertical / 39.7 lbf Horizontal                                      | SGS                |
| Wind Resistance                        | ASTM D3161-09                        | 150 mph for 2 hours   | PRI                |
| Class 4 Impact Resistance              | UL 2218, 2010                        | No damage, tearing, fracturing, cracking, splitting, rupture, crazing, etc. | PRI                |
| Tensile Strength, Elongation & Modulus | ASTM D412                            | 0.87 Tensile, 0.76 @ Break/71.5% Elongation, 92.4% @ Break/3.49 Modulus     | Element            |
| Tear Resistance                        | ASTM 624                             | 156 Peak Tearing Load / 11.3 Peak Tearing Strength                          | Element            |
| Taber Abrasion Index                   | ASTM D3389                           | 0.719   | SGS                |
| Durometer of Hardness                  | ASTM D2240                           | 54 Points Shore A   | Element            |
| Compression Deflection                 | ASTM D1667                           | 577 kPa @ 25% / 25.227 mm   | Element            |
| Coefficient of Thermal Expansion       | ASTM E831                            | .0013 in/Ft Per Degree  | Element            |
| Mass Per Area/Thickness/Density/Force  | ASTM D3676                           | 14.28 kg/m2 / 74pcf / 1262 kg/m2 / 1460 kPa                                 | Element            |
| Compression Resistance                 | ASTM D3574                           | 2.78 kN Load to Preset / 1030 kPa Compression Resistance                    | Element            |
| Constant Deflection Compression Set    | ASTM D3676 (13) D395                 | 99.9% Recovery  | Element            |

Solid EPDM/TPV Tops are only available in the 1" and 1 3/8" thickness only.

\*We undertake all assignments for our clients on a best efforts basis. Our findings and judgments are based on the information given to us using the lasted test methods available. We can only ensure the test results for the specific items tested. Unless otherwise noted in the deviations section of this report, all tests are performed in compliance with stated test method.

Local Dealer's (Rep's) Business Card Here



Unity Creations, Ltd.  
Unity Surfacing Systems  
3997 Rt. 9W (P.O. Box 9)  
Saugerties, NY 12477

T: (1-877) 41-Unity F: (845) 246-1700  
E-mail: productinfo@surfacingssystems.com  
Internet: www.surfacingssystems.com

Unity believes that our products size, weight, durability, longevity, fall protection ratings (the highest in the industry), and ability to have an integrated self-interlocking feature (for rooftop applications), with bolt-down capabilities (for playground use), can be effectively and easily secured on site to eliminate the potential for wind-up-lift, vandalism and maintenance issues. Everyone at Unity Creations, Ltd. / Unity Surfacing Systems would like to thank you for your interest in our products and services.

[www.surfacingssystems.com](http://www.surfacingssystems.com)