

Unity™ Surfacing

A Unity Creations Co. Manufacturing Rubberized Safety Surfacing, Flooring and Paver Products

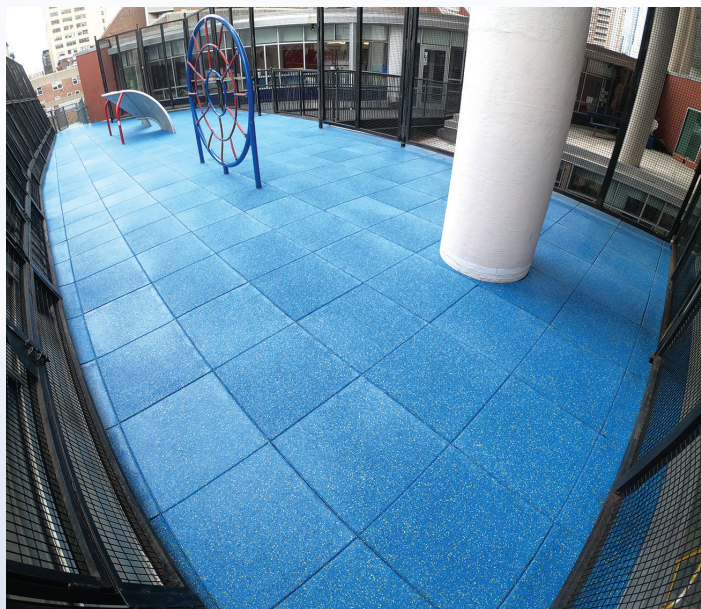
PLAY-LAND 2.5

TILE
MAT
BLOCK
PAVER
SYSTEM

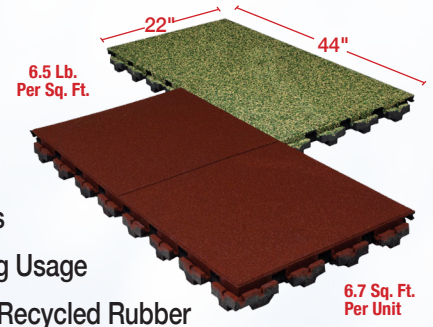
Our 2.5" thick Play-Land Series is designed to meet or exceed all of your project needs for use on medium height playground areas (yielding a 6 ft fall rating or less), rooftops, recreational areas, fitness facilities and more. It is the foundation for a smart, long-term investment in durability and beauty that will last for years to come.

As the industry leader, the superior raw materials we use, coupled with our proprietary manufacturing process, unique bottom design and large size product gives you the strongest, highest quality, environmentally friendly rubber tile system available.

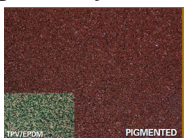
All of our products are independently laboratory tested with respect to ASTM, CPSC, ADA and Wind safety standards and guidelines to be installed over new and existing sub-bases and rooftop, both indoors and outdoors.



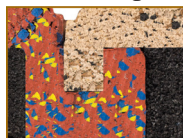
- Easy to Install
- ADA Compliant
- Water Permeable
- Little to No Maintenance
- Built-in Pedestal Designs
- Does not Displace During Usage
- Made In The USA Using Recycled Rubber
- Double Tiles Allows for Faster Installations
- Provides Thermal and Mechanical Protection
- Conforms to Any Low-Sloped Waterproofing Membranes
- Can Be Installed on Compacted Stone or Solid Sub-bases
- Staggered Locks Allow for Free-Flowing Designs & Layouts
- Ideal for Playgrounds, Rooftops, Fitness, Schools, Parks, Etc.



High Density Wear Tops



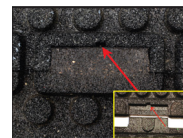
Self Interlocking Design



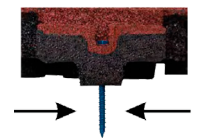
New Bottom-Lock™ Technology



Glue Reservoir



Bolt-Down

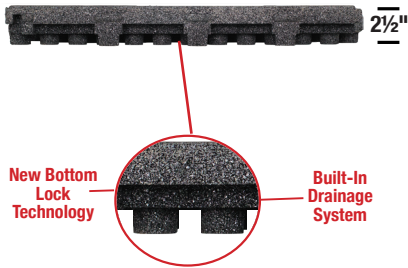


*The Bolt-Down method of installation should only be used on solid ground level installations and not rooftops what-so-ever.

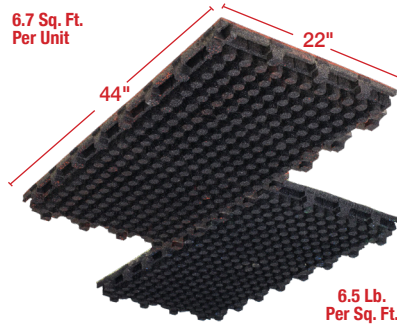


Technical Information

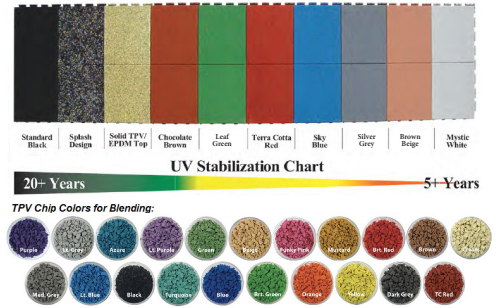
Thickness:



Bottom View:



Color Types:



*The bolt-down method of installation should only be used on solid ground level installations and not compacted stone bases nor rooftops what-so-ever.

Testing:

Testing Criteria:	Ref./Guide:	End Result:	Testing Lab:
Impact Attenuation	ASTM F1292-04	Yielding a Six (6') foot Fall Height Protection Rating	DTL/Element
Weathering/Aging	ASTMC67, D573	No Deterioration	TUV
Flamability	ASTM E108	Class A	V-Tec
Flamability	ASTM E108 for Roof Coverings	Class A (Burn Stop @ 38 sec)	V-Tec
Flamability	ASTM E648	Class 1 (0.45 watts/cm2)	Govmark
Burn Pill	ASTM 2859	3.7"	Govmark
Skid Resistance	ASTM 303-93 (2013)	67 Wet / 80.25 Dry	V-Tec
ADA Accessibility	ASTM 1951-99	0.26 Firm / 0.28 Stability	Beneficial Designs
R-Value (Thermal Con)	ASTM C518-98	0.939 Con./2.4 Res. and <	SGS
Reflectance/SRI/Emittance	ASTM E903, E891 and E1980	5.1-68.6 %Solar Ref./3-86 SRI	Atlas
Lead in Materials/Children's Products	CPSC-CH-E1002-08	2 ppm/ MDL	SGS
Water Penetration	Sustainable Storm Water Mgt./Run-off	0.13 gal. Body/0.21 gal. Seam	SGS
Pull Force	ANSI/FM 4474 Approval, Appendix B	132 lbf Vertical / 39.7 lbf Horizontal	SGS
Wind Resistance	ASTM D3161-09	150 mph for 2 hours	PRI
Class 4 Impact Resistance	UL 2218, 2010	No damage, tearing, fracturing, cracking, splitting, rupture, crazing, etc.	PRI
Tensile Strength, Elongation & Modulus	ASTM D412	0.87 Tensile, 0.76 @ Break/71.5% Elongation, 92.4% @ Break/3.49 Modulus	Element
Tear Resistance	ASTM 624	156 Peak Tearing Load / 11.3 Peak Tearing Strength	Element
Taber Abrasion Index	ASTM D3389	0.719	SGS
Durometer of Hardness	ASTM D2240	54 Points Shore A	Element
Compression Deflection	ASTM D1667	577 kPa @ 25% / 25.227 mm	Element
Coefficient of Thermal Expansion	ASTM E831	.0013 in/Ft Per Degree	Element
Mass Per Area/Thickness/Density/Force	ASTM D3676	14.28 kg/m2 / 74pcf / 1262 kg/m2 / 1460 kPa	Element
Compression Resistance	ASTM D3574	2.78 kN Load to Preset / 1030 kPa Compression Resistance	Element
Constant Deflection Compression Set	ASTM D3676 (13) D395	99.9% Recovery	Element

*We undertake all assignments for our clients on a best efforts basis. Our findings and judgments are based on the information given to us using the lasted test methods available. We can only ensure the test results for the specific items tested. Unless otherwise noted in the deviations section of this report, all tests are performed in compliance with stated test method.

Local Dealer's (Rep's) Business Card Here



Unity Creations, Ltd.
Unity Surfacing Systems
3997 Rt. 9W (P.O. Box 9)
Saugerties, NY 12477

T: (1-877) 41-Unity F: (845) 246-1700
E-mail: productinfo@surfacingssystems.com
Internet: www.surfacingssystems.com

Unity believes that our products size, weight, durability, longevity, fall protection ratings (the highest in the industry), and ability to have an integrated self-interlocking feature (for rooftop applications), with bolt-down capabilities (for playground use), can be effectively and easily secured on site to eliminate the potential for wind-up-lift, vandalism and maintenance issues. Everyone at Unity Creations, Ltd. / Unity Surfacing Systems would like to thank you for your interest in our products and services.

www.surfacingssystems.com